

Anti-Phospho-ELK1-Ser383 antibody (351-400 aa) (STJ90255)

STJ90255

GENERAL INFORMATION

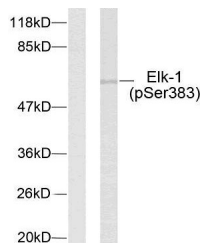
Product Type	Primary antibodies
Short Description	Rabbit polyclonal antibody anti-Phospho-ETS domain-containing protein Elk-1-Ser383 (351-400 aa) is suitable for use in Western Blot, Immunohistochemistry, Immunofluorescence, Immunoprecipitation and ELISA research applications.
Applications	WB/IHC/IF/IP/ELISA
Host/Source	Rabbit
Reactivity	Human/Mouse/Rat

PRODUCT PROPERTIES

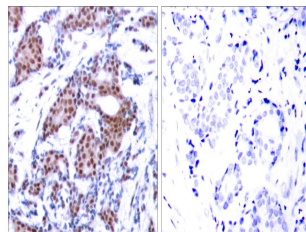
Clonality	Polyclonal
Clone ID	
Concentration	1 mg/mL
Conjugation	Unconjugated
Purification	The antibody was affinity-purified from rabbit antiserum by affinity-chromatography using epitope-specific immunogen.
Dilution	WB 1:500-1:2000
Range	IHC 1:100-1:300 IP 2-5 ug mg/lysate ELISA 1:20000 IF 1:50-200
Formulation	Liquid in PBS containing 50% Glycerol, 0.5% BSA and 0.02% Sodium Azide.
Isotype	IgG
Storage	Store at -20°C for up to 1 year from the date of receipt, and avoid repeat freeze-thaw cycles.
Instruction	

TARGET INFORMATION

Gene ID	2002
Gene Symbol	ELK1
Uniprot ID	ELK1_HUMAN
Immunogen	The antiserum was produced against synthesized peptide derived from the human Elk1 around the phosphorylation site of Ser383 at the amino acid range 351-400
Immunogen Region	351-400 aa
Specificity	Phospho-Elk-1 (S383) Polyclonal Antibody detects endogenous levels of Elk-1 protein only when phosphorylated at S383.
Immunogen Sequence	



Western blot analysis of lysates from HeLa cells treated with UV, using Elk1 (Phospho-Ser383) Antibody. The lane on the left is blocked with the phospho peptide.



Immunohistochemistry analysis of paraffin-embedded human breast carcinoma, using Elk1 (Phospho-Ser383) Antibody. The picture on the right is blocked with the phospho peptide.