

Anti-Phospho-eIF4E-Ser209 antibody (168-217 aa) (STJ90254)

STJ90254

GENERAL INFORMATION

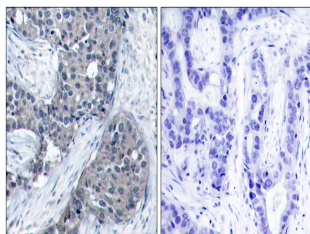
Product Type	Primary antibodies
Short Description	Rabbit polyclonal antibody anti-Phospho-Eukaryotic translation initiation factor 4E-Ser209 (168-217 aa) is suitable for use in Western Blot, Immunohistochemistry, Immunofluorescence and ELISA research applications.
Applications	WB/IHC/IF/ELISA
Host/Source	Rabbit
Reactivity	Human/Mouse/Rat

PRODUCT PROPERTIES

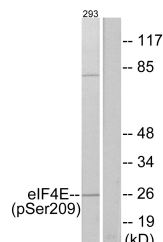
Clonality	Polyclonal
Clone ID	
Concentration	1 mg/mL
Conjugation	Unconjugated
Purification	The antibody was affinity-purified from rabbit antiserum by affinity-chromatography using epitope-specific immunogen.
Dilution Range	WB 1:500-1:2000 IHC 1:100-1:300 ELISA 1:20000 IF 1:50-200
Formulation	Liquid in PBS containing 50% Glycerol, 0.5% BSA and 0.02% Sodium Azide.
Isotype	IgG
Storage Instruction	Store at -20°C for up to 1 year from the date of receipt, and avoid repeat freeze-thaw cycles.

TARGET INFORMATION

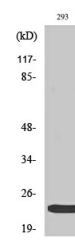
Gene ID	1977
Gene Symbol	EIF4E
Uniprot ID	IF4E_HUMAN
Immunogen	The antiserum was produced against synthesized peptide derived from the human eIF4E around the phosphorylation site of Ser209 at the amino acid range 168-217
Immunogen Region	168-217 aa
Specificity	Phospho-eIF4E (S209) Polyclonal Antibody detects endogenous levels of eIF4E protein only when phosphorylated at S209.
Immunogen Sequence	



Immunohistochemistry analysis of paraffin-embedded human breast carcinoma, using eIF4E (Phospho-Ser209) Antibody. The picture on the right is blocked with the phospho peptide.



Western blot analysis of lysates from 293 cells treated with Anisomycin 25ug/ml 30', using eIF4E (Phospho-Ser209) Antibody. The lane on the right is blocked with the phospho peptide.



Western blot analysis of various cells using Phospho-eIF4E (S209) Polyclonal Antibody