

Anti-Phospho-EGFR-Tyr1092 antibody (1061-1110 aa) (STJ90248)

STJ90248

GENERAL INFORMATION

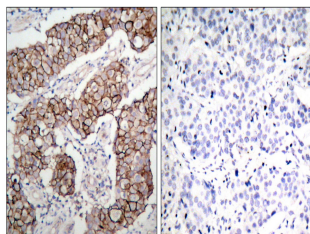
Product Type	Primary antibodies
Short Description	Rabbit polyclonal antibody anti-Phospho-Epidermal growth factor receptor-Tyr1092 (1061-1110 aa) is suitable for use in Western Blot, Immunohistochemistry, Immunofluorescence and ELISA research applications.
Applications	WB/IHC/IF/ELISA
Host/Source	Rabbit
Reactivity	Human/Mouse/Rat

PRODUCT PROPERTIES

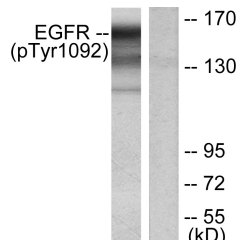
Clonality	Polyclonal
Clone ID	
Concentration	1 mg/mL
Conjugation	Unconjugated
Purification	The antibody was affinity-purified from rabbit antiserum by affinity-chromatography using epitope-specific immunogen.
Dilution	WB 1:500-1:2000
Range	IHC 1:100-1:300 ELISA 1:20000 IF 1:50-200
Formulation	Liquid in PBS containing 50% Glycerol, 0.5% BSA and 0.02% Sodium Azide.
Isotype	IgG
Storage	Store at -20°C for up to 1 year from the date of receipt, and avoid repeat freeze-thaw cycles.
Instruction	

TARGET INFORMATION

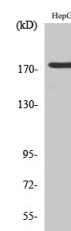
Gene ID	1956
Gene Symbol	EGFR
Uniprot ID	EGFR_HUMAN
Immunogen	The antiserum was produced against synthesized peptide derived from the human EGFR around the phosphorylation site of Tyr1092 at the amino acid range 1061-1110
Immunogen Region	1061-1110 aa
Specificity	Phospho-EGFR (Y1092) Polyclonal Antibody detects endogenous levels of EGFR protein only when phosphorylated at Y1092.
Immunogen Sequence	



Immunohistochemistry analysis of paraffin-embedded human breast carcinoma, using EGFR (Phospho-Tyr1092) Antibody. The picture on the right is blocked with the phospho peptide.



Western blot analysis of lysates from HUVEC cells treated with EGF, using EGFR (Phospho-Tyr1092) Antibody. The lane on the right is blocked with the phospho peptide.



Western blot analysis of various cells using Phospho-EGFR (Y1092) Polyclonal Antibody diluted at 1:1000