

Anti-Phospho-KRT8-Ser73 antibody (41-90 aa) (STJ90242)

STJ90242

GENERAL INFORMATION

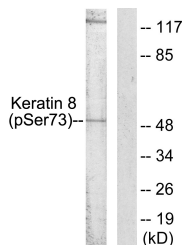
Product Type	Primary antibodies
Short Description	Rabbit polyclonal antibody anti-Phospho-Keratin, type II cytoskeletal 8-Ser73 (41-90 aa) is suitable for use in Western Blot, Immunohistochemistry, Immunofluorescence and ELISA research applications.
Applications	WB/IHC/IF/ELISA
Host/Source	Rabbit
Reactivity	Human/Mouse

PRODUCT PROPERTIES

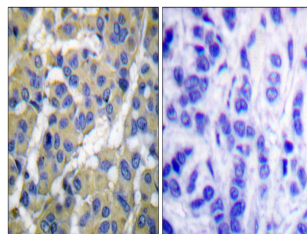
Clonality	Polyclonal
Clone ID	
Concentration	1 mg/mL
Conjugation	Unconjugated
Purification	The antibody was affinity-purified from rabbit antiserum by affinity-chromatography using epitope-specific immunogen.
Dilution	WB 1:500-1:2000
Range	IHC 1:100-1:300 ELISA 1:40000 IF 1:50-200
Formulation	Liquid in PBS containing 50% Glycerol, 0.5% BSA and 0.02% Sodium Azide.
Isotype	IgG
Storage Instruction	Store at -20°C for up to 1 year from the date of receipt, and avoid repeat freeze-thaw cycles.

TARGET INFORMATION

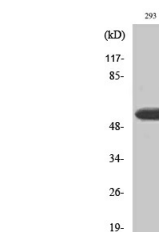
Gene ID	3856
Gene Symbol	KRT8
Uniprot ID	K2C8_HUMAN
Immunogen	The antiserum was produced against synthesized peptide derived from the human Keratin 8 around the phosphorylation site of Ser73 at the amino acid range 41-90
Immunogen Region	41-90 aa
Specificity	Phospho-Cytokeratin 8 (S73) Polyclonal Antibody detects endogenous levels of Cytokeratin 8 protein only when phosphorylated at S73.
Immunogen Sequence	



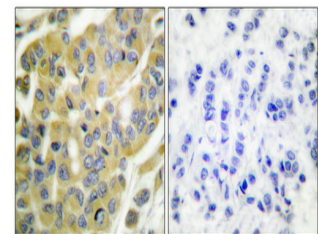
Western blot analysis of lysates from 293 cells treated with Etoposide 25uM 60', using Keratin 8 (Phospho-Ser73) Antibody. The lane on the right is blocked with the phospho peptide.



Immunohistochemistry analysis of paraffin-embedded human breast carcinoma, using Keratin 8 (Phospho-Ser73) Antibody. The picture on the right is blocked with the phospho peptide.



Western blot analysis of 293 cells using Phospho-Cytokeratin 8 (S73) Polyclonal Antibody diluted at 1:100



Immunohistochemical analysis of paraffin-embedded Human breast cancer. Antibody was diluted at 1:100 (4°C overnight). High-pressure and temperature Tris-EDTA, pH8.0 was used for antigen retrieval. Negative control (right) obtained from antibody was pre-absorbed by immunogen peptide.

This product is suitable for in-vitro studies under the RESEARCH USE ONLY [RUO] licence. This product must not be used as for diagnostic or other medical purposes.

St John's Laboratory Ltd, Knowledge Dock Business Centre, University Way, London, E16 2RD | Tel: 0208 223 3081