

Anti-Phospho-CREB1-Ser133 antibody (100-149 aa) (STJ90235)

STJ90235

GENERAL INFORMATION

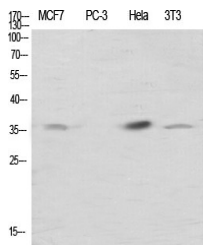
Product Type	Primary antibodies
Short Description	Rabbit polyclonal antibody anti-Phospho-Cyclic AMP-responsive element-binding protein 1-Ser133 (100-149 aa) is suitable for use in Immunofluorescence, Western Blot, Immunohistochemistry, Immunoprecipitation and ELISA research applications.
Applications	IF/WB/IHC/IP/ELISA
Host/Source	Rabbit
Reactivity	Human/Mouse/Rat/Pig

PRODUCT PROPERTIES

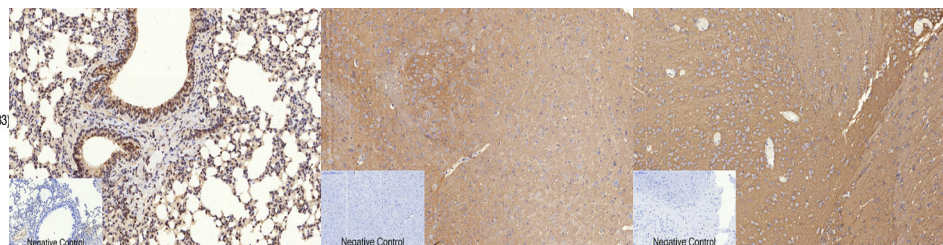
Clonality	Polyclonal
Clone ID	
Concentration	1 mg/mL
Conjugation	Unconjugated
Purification	The antibody was affinity-purified from rabbit antiserum by affinity-chromatography using epitope-specific immunogen.
Dilution	IF 1:50-200
Range	WB 1:500-1:2000 IHC 1:100-1:300 IP 2-5 ug mg/lysate ELISA 1:10000
Formulation	Liquid in PBS containing 50% Glycerol, 0.5% BSA and 0.02% Sodium Azide.
Isotype	IgG
Storage	Store at -20°C for up to 1 year from the date of receipt, and avoid repeat freeze-thaw cycles.
Instruction	

TARGET INFORMATION

Gene ID	1385
Gene Symbol	CREB1
Uniprot ID	CREB1_HUMAN
Immunogen	The antiserum was produced against synthesized peptide derived from the human CREB around the phosphorylation site of Ser133 at the amino acid range 100-149
Immunogen Region	100-149 aa
Specificity	Phospho-CREB-1 (S133) Polyclonal Antibody detects endogenous levels of CREB-1 protein only when phosphorylated at S133.
Immunogen Sequence	



Western blot analysis of various cells using Phospho-CREB-1 (S133) Polyclonal Antibody diluted at 1:10 2000



Immunohistochemical analysis of paraffin-embedded Mouse-lung tissue. 1, CREB-1 (phospho Ser133) Polyclonal Antibody was diluted at 1:200 (4A°C, overnight). 2, Sodium citrate pH 6.0 was used for antibody retrieval (>98A°C, 20min). 3, Secondary antibody was diluted at 1:200 (room temperature, 30min). Negative control was used by secondary antibody only.

Immunohistochemical analysis of paraffin-embedded Mouse-brain tissue. 1, CREB-1 (phospho Ser133) Polyclonal Antibody was diluted at 1:200 (4A°C, overnight). 2, Sodium citrate pH 6.0 was used for antibody retrieval (>98A°C, 20min). 3, Secondary antibody was diluted at 1:200 (room temperature, 30min). Negative control was used by secondary antibody only.

Immunohistochemical analysis of paraffin-embedded Rat-brain tissue. 1, CREB-1 (phospho Ser133) Polyclonal Antibody was diluted at 1:200 (4A°C, overnight). 2, Sodium citrate pH 6.0 was used for antibody retrieval (>98A°C, 20min). 3, Secondary antibody was diluted at 1:200 (room temperature, 30min). Negative control was used by secondary antibody only.

This product is suitable for in-vitro studies under the RESEARCH USE ONLY [RUO] licence. This product must not be used as for diagnostic or other medical purposes.
St John's Laboratory Ltd, Knowledge Dock Business Centre, University Way, London, E16 2RD | Tel: 0208 223 3081