

Anti-Phospho-MYC-Thr358 antibody (325-374 aa) (STJ90228)

STJ90228

GENERAL INFORMATION

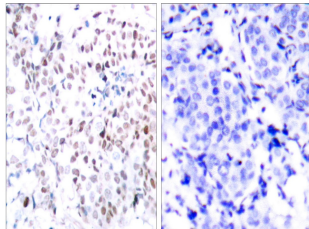
Product Type	Primary antibodies
Short Description	Rabbit polyclonal antibody anti-Phospho-Myc proto-oncogene protein-Thr358 (325-374 aa) is suitable for use in Immunohistochemistry, Immunofluorescence, Immunoprecipitation and ELISA research applications.
Applications	IHC/IF/IP/ELISA
Host/Source	Rabbit
Reactivity	Human/Mouse/Rat

PRODUCT PROPERTIES

Clonality	Polyclonal
Clone ID	
Concentration	1 mg/mL
Conjugation	Unconjugated
Purification	The antibody was affinity-purified from rabbit antiserum by affinity-chromatography using epitope-specific immunogen.
Dilution	IHC 1:100-1:300
Range	IP 2-5 ug mg/lysate ELISA 1:20000 IF 1:50-200
Formulation	Liquid in PBS containing 50% Glycerol, 0.5% BSA and 0.02% Sodium Azide.
Isotype	IgG
Storage Instruction	Store at -20°C for up to 1 year from the date of receipt, and avoid repeat freeze-thaw cycles.

TARGET INFORMATION

Gene ID	4609
Gene Symbol	MYC
Uniprot ID	MYC_HUMAN
Immunogen	The antiserum was produced against synthesized peptide derived from the human Myc around the phosphorylation site of Thr358 at the amino acid range 325-374
Immunogen Region	325-374 aa
Specificity	Phospho-c-Myc (T358) Polyclonal Antibody detects endogenous levels of c-Myc protein only when phosphorylated at T358.
Immunogen Sequence	



Immunohistochemistry analysis of paraffin-embedded human breast carcinoma, using Myc (Phospho-Thr358) Antibody. The picture on the right is blocked with the phospho peptide.