

## Anti-Phospho-CHEK2-Thr68 antibody (35-84 aa) (STJ90225)

STJ90225

### GENERAL INFORMATION

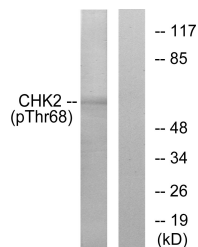
<b>Product Type</b>	Primary antibodies
<b>Short Description</b>	Rabbit polyclonal antibody anti-Phospho-Serine/threonine-protein kinase Chk2-Thr68 (35-84 aa) is suitable for use in Immunofluorescence, Western Blot, Immunohistochemistry and ELISA research applications.
<b>Applications</b>	IF/WB/IHC/ELISA
<b>Host/Source</b>	Rabbit
<b>Reactivity</b>	Human/Mouse/Rat

### PRODUCT PROPERTIES

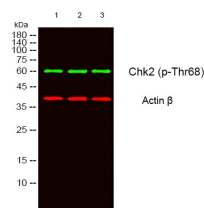
<b>Clonality</b>	Polyclonal
<b>Clone ID</b>	
<b>Concentration</b>	1 mg/mL
<b>Conjugation</b>	Unconjugated
<b>Purification</b>	The antibody was affinity-purified from rabbit antiserum by affinity-chromatography using epitope-specific immunogen.
<b>Dilution</b>	IF 1:50-200
<b>Range</b>	WB 1:500-1:2000 IHC 1:100-1:300 ELISA 1:20000
<b>Formulation</b>	Liquid in PBS containing 50% Glycerol, 0.5% BSA and 0.02% Sodium Azide.
<b>Isotype</b>	IgG
<b>Storage Instruction</b>	Store at -20°C for up to 1 year from the date of receipt, and avoid repeat freeze-thaw cycles.

### TARGET INFORMATION

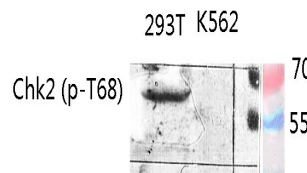
<b>Gene ID</b>	11200
<b>Gene Symbol</b>	CHEK2
<b>Uniprot ID</b>	CHK2_HUMAN
<b>Immunogen</b>	The antiserum was produced against synthesized peptide derived from the human Chk2 around the phosphorylation site of Thr68 at the amino acid range 35-84
<b>Immunogen Region</b>	35-84 aa
<b>Specificity</b>	Phospho-Chk2 (T68) Polyclonal Antibody detects endogenous levels of Chk2 protein only when phosphorylated at T68.
<b>Immunogen Sequence</b>	



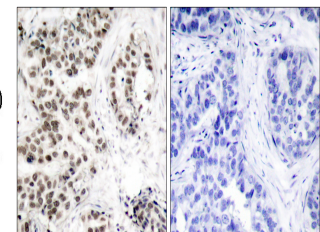
Western blot analysis of lysates from Jurkat cells treated with UV, using Chk2 (Phospho-Thr68) Antibody. The lane on the right is blocked with the phospho peptide.



Western blot analysis of lysates from 1) 293T, 2) HELA cells. (Green) primary antibody was diluted at 1:1000, 4A°C over night, secondary antibody (cat: NA) was diluted at 1:10000, 37A°C 1hour. (Red) Actin Beta monoclonal antibody (557) (cat: STJ96930) antibody was diluted at 1:5000 as loading control, 4A°C over night, secondary antibody (cat: NA) was diluted at 1:10000, 37A°C 1hour.



Western blot analysis of various lysis using Phospho-Chk2 (T68) Polyclonal Antibody diluted at 11/4500. Secondary antibody was diluted at 1:20000 cells nucleus extracted by Minute TM Cytoplasmic and Nuclear Fractionation kit (SC-003, Inventibiotec, MN, USA).



Immunohistochemistry analysis of paraffin-embedded human lung carcinoma, using Chk2 (Phospho-Thr68) Antibody. The picture on the right is blocked with the phospho peptide.

This product is suitable for in-vitro studies under the RESEARCH USE ONLY [RUO] licence. This product must not be used as for diagnostic or other medical purposes.

St John's Laboratory Ltd, Knowledge Dock Business Centre, University Way, London, E16 2RD | Tel: 0208 223 3081