

Anti-Phospho-CHEK2-Ser516 antibody (486-535 aa) (STJ90224)

STJ90224

GENERAL INFORMATION

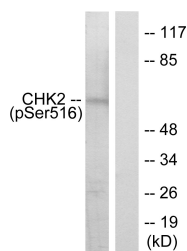
Product Type	Primary antibodies
Short Description	Rabbit polyclonal antibody anti-Phospho-Serine/threonine-protein kinase Chk2-Ser516 (486-535 aa) is suitable for use in Western Blot and ELISA research applications.
Applications	WB/ELISA
Host/Source	Rabbit
Reactivity	Human/Monkey

PRODUCT PROPERTIES

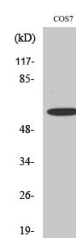
Clonality	Polyclonal
Clone ID	
Concentration	1 mg/mL
Conjugation	Unconjugated
Purification	The antibody was affinity-purified from rabbit antiserum by affinity-chromatography using epitope-specific immunogen.
Dilution Range	WB 1:500-1:2000 ELISA 1:10000
Formulation	Liquid in PBS containing 50% Glycerol, 0.5% BSA and 0.02% Sodium Azide.
Isotype	IgG
Storage	Store at -20°C for up to 1 year from the date of receipt, and avoid repeat freeze-thaw cycles.
Instruction	

TARGET INFORMATION

Gene ID	11200
Gene Symbol	CHEK2
Uniprot ID	CHK2_HUMAN
Immunogen	The antiserum was produced against synthesized peptide derived from the human Chk2 around the phosphorylation site of Ser516 at the amino acid range 486-535
Immunogen Region	486-535 aa
Specificity	Phospho-Chk2 (S516) Polyclonal Antibody detects endogenous levels of Chk2 protein only when phosphorylated at S516.
Immunogen Sequence	



Western blot analysis of lysates from HeLa cells treated with UV, using Chk2 (Phospho-Ser516) Antibody. The lane on the right is blocked with the phospho peptide.



Western blot analysis of various cells using Phospho-Chk2 (S516) Polyclonal Antibody cells nucleus extracted by Minute TM Cytoplasmic and Nuclear Fractionation kit (SC-003, Inventiotech, MN, USA).