

Anti-Phospho-CHEK1-Ser280 antibody (251-300 aa) (STJ90221)

STJ90221

GENERAL INFORMATION

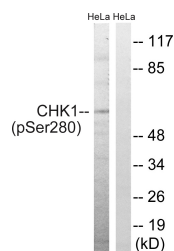
Product Type	Primary antibodies
Short Description	Rabbit polyclonal antibody anti-Phospho-Serine/threonine-protein kinase Chk1-Ser280 (251-300 aa) is suitable for use in Western Blot and ELISA research applications.
Applications	WB/ELISA
Host/Source	Rabbit
Reactivity	Human/Rat/Mouse

PRODUCT PROPERTIES

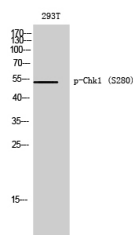
Clonality	Polyclonal
Clone ID	
Concentration	1 mg/mL
Conjugation	Unconjugated
Purification	The antibody was affinity-purified from rabbit antiserum by affinity-chromatography using epitope-specific immunogen.
Dilution Range	WB 1:500-1:2000 ELISA 1:20000
Formulation	Liquid in PBS containing 50% Glycerol, 0.5% BSA and 0.02% Sodium Azide.
Isotype	IgG
Storage	Store at -20°C for up to 1 year from the date of receipt, and avoid repeat freeze-thaw cycles.
Instruction	

TARGET INFORMATION

Gene ID	1111
Gene Symbol	CHEK1
Uniprot ID	CHK1_HUMAN
Immunogen	The antiserum was produced against synthesized peptide derived from the human Chk1 around the phosphorylation site of Ser280 at the amino acid range 251-300
Immunogen Region	251-300 aa
Specificity	Phospho-Chk1 (S280) Polyclonal Antibody detects endogenous levels of Chk1 protein only when phosphorylated at S280.
Immunogen Sequence	



Western blot analysis of lysates from HeLa cells treated with HU 2nM 24 hours, using Chk1 (Phospho-Ser280) Antibody. The lane on the right is blocked with the phospho peptide.



Western blot analysis of 293T cells using Phospho-Chk1 (S280) Polyclonal Antibody diluted at 1/4 500