

Anti-Phospho-CTNNB1-Thr41/S45 antibody (11-60 aa) (STJ90208)

STJ90208

GENERAL INFORMATION

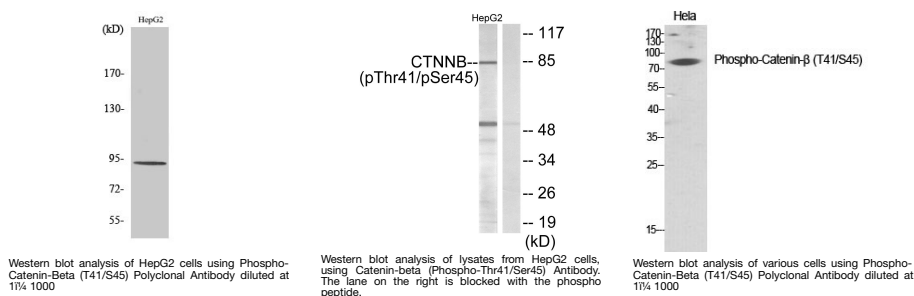
Product Type	Primary antibodies
Short Description	Rabbit polyclonal antibody anti-Phospho-Catenin beta-1-Thr41/S45 (11-60 aa) is suitable for use in Western Blot and ELISA research applications.
Applications	WB/ELISA
Host/Source	Rabbit
Reactivity	Human/Mouse/Rat

PRODUCT PROPERTIES

Clonality	Polyclonal
Clone ID	
Concentration	1 mg/mL
Conjugation	Unconjugated
Purification	The antibody was affinity-purified from rabbit antiserum by affinity-chromatography using epitope-specific immunogen.
Dilution Range	WB 1:500-1:2000 ELISA 1:20000
Formulation	Liquid in PBS containing 50% Glycerol, 0.5% BSA and 0.02% Sodium Azide.
Isotype	IgG
Storage	Store at -20°C for up to 1 year from the date of receipt, and avoid repeat freeze-thaw cycles.
Instruction	

TARGET INFORMATION

Gene ID	1499
Gene Symbol	CTNNB1
Uniprot ID	CTNB1_HUMAN
Immunogen	The antiserum was produced against synthesized peptide derived from the human Catenin-beta around the phosphorylation site of Thr41/Ser45 at the amino acid range 11-60
Immunogen Region	11-60 aa
Specificity	Phospho-Catenin-Beta (T41/S45) Polyclonal Antibody detects endogenous levels of Catenin-Beta protein only when phosphorylated at T41/S45.
Immunogen Sequence	



This product is suitable for in-vitro studies under the RESEARCH USE ONLY [RUO] licence. This product must not be used as for diagnostic or other medical purposes.
St John's Laboratory Ltd, Knowledge Dock Business Centre, University Way, London, E16 2RD | Tel: 0208 223 3081