

Anti-Phospho-CASP8-Ser347 antibody (313-362 aa) (STJ90205)

STJ90205

GENERAL INFORMATION

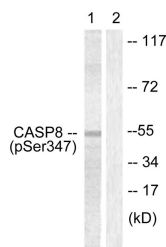
Product Type	Primary antibodies
Short Description	Rabbit polyclonal antibody anti-Phospho-Caspase-8-Ser347 (313-362 aa) is suitable for use in Western Blot, Immunohistochemistry, Immunofluorescence and ELISA research applications.
Applications	WB/IHC/IF/ELISA
Host/Source	Rabbit
Reactivity	Human/Rat

PRODUCT PROPERTIES

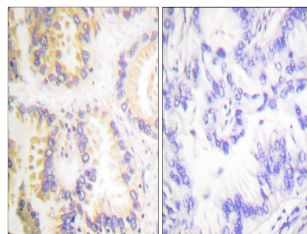
Clonality	Polyclonal
Clone ID	
Concentration	1 mg/mL
Conjugation	Unconjugated
Purification	The antibody was affinity-purified from rabbit antiserum by affinity-chromatography using epitope-specific immunogen.
Dilution Range	WB 1:500-1:2000 IHC 1:100-1:300 ELISA 1:5000 IF 1:50-200
Formulation	Liquid in PBS containing 50% Glycerol, 0.5% BSA and 0.02% Sodium Azide.
Isotype	IgG
Storage Instruction	Store at -20°C for up to 1 year from the date of receipt, and avoid repeat freeze-thaw cycles.

TARGET INFORMATION

Gene ID	841
Gene Symbol	CASP8
Uniprot ID	CASP8_HUMAN
Immunogen	The antiserum was produced against synthesized peptide derived from the human Caspase 8 around the phosphorylation site of Ser347 at the amino acid range 313-362
Immunogen Region	313-362 aa
Specificity	Phospho-Caspase-8 (S347) Polyclonal Antibody detects endogenous levels of Caspase-8 protein only when phosphorylated at S347.
Immunogen Sequence	



Western blot analysis of lysates from Jurkat cells, using Caspase 8 (Phospho-Ser347) Antibody. The lane on the right is blocked with the phospho peptide.



Immunohistochemistry analysis of paraffin-embedded human lung carcinoma, using Caspase 8 (Phospho-Ser347) Antibody. The picture on the right is blocked with the phospho peptide.