

Anti-Phospho-BCR-Tyr177 antibody (144-193 aa) (STJ90196)

STJ90196

GENERAL INFORMATION

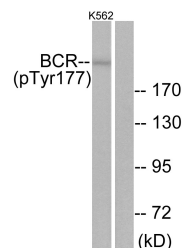
Product Type	Primary antibodies
Short Description	Rabbit polyclonal antibody anti-Phospho-Breakpoint cluster region protein-Tyr177 (144-193 aa) is suitable for use in Western Blot and ELISA research applications.
Applications	WB/ELISA
Host/Source	Rabbit
Reactivity	Human/Mouse

PRODUCT PROPERTIES

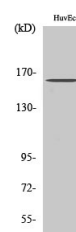
Clonality	Polyclonal
Clone ID	
Concentration	1 mg/mL
Conjugation	Unconjugated
Purification	The antibody was affinity-purified from rabbit antiserum by affinity-chromatography using epitope-specific immunogen.
Dilution Range	WB 1:500-1:2000 ELISA 1:10000
Formulation	Liquid in PBS containing 50% Glycerol, 0.5% BSA and 0.02% Sodium Azide.
Isotype	IgG
Storage	Store at -20°C for up to 1 year from the date of receipt, and avoid repeat freeze-thaw cycles.
Instruction	

TARGET INFORMATION

Gene ID	613
Gene Symbol	BCR
Uniprot ID	BCR_HUMAN
Immunogen	The antiserum was produced against synthesized peptide derived from the human Bcr around the phosphorylation site of Tyr177 at the amino acid range 144-193
Immunogen Region	144-193 aa
Specificity	Phospho-Bcr (Y177) Polyclonal Antibody detects endogenous levels of Bcr protein only when phosphorylated at Y177.
Immunogen Sequence	



Western blot analysis of lysates from K562 cells, using Bcr (Phospho-Tyr177) Antibody. The lane on the right is blocked with the phospho peptide.



Western blot analysis of various cells using Phospho-Bcr (Y177) Polyclonal Antibody

This product is suitable for in-vitro studies under the RESEARCH USE ONLY [RUO] licence. This product must not be used as for diagnostic or other medical purposes.
St John's Laboratory Ltd, Knowledge Dock Business Centre, University Way, London, E16 2RD | Tel: 0208 223 3081