

Anti-Phospho-BCL2L1-Thr47 antibody (13-62 aa) (STJ90195)

STJ90195

GENERAL INFORMATION

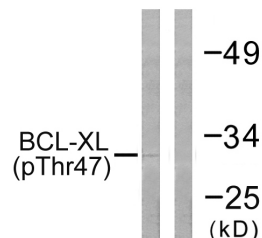
Product Type	Primary antibodies
Short Description	Rabbit polyclonal antibody anti-Phospho-Bcl-2-like protein 1-Thr47 (13-62 aa) is suitable for use in Western Blot, Immunohistochemistry, Immunofluorescence and ELISA research applications.
Applications	WB/IHC/IF/ELISA
Host/Source	Rabbit
Reactivity	Human/Mouse/Rat

PRODUCT PROPERTIES

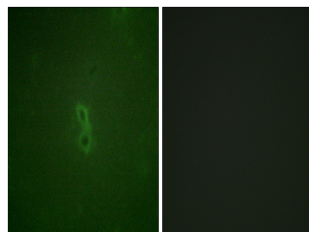
Clonality	Polyclonal
Clone ID	
Concentration	1 mg/mL
Conjugation	Unconjugated
Purification	The antibody was affinity-purified from rabbit antiserum by affinity-chromatography using epitope-specific immunogen.
Dilution Range	WB 1:500-1:2000 IHC 1:100-1:300 IF 1:200-1:1000 ELISA 1:40000
Formulation	Liquid in PBS containing 50% Glycerol, 0.5% BSA and 0.02% Sodium Azide.
Isotype	IgG
Storage	Store at -20°C for up to 1 year from the date of receipt, and avoid repeat freeze-thaw cycles.
Instruction	

TARGET INFORMATION

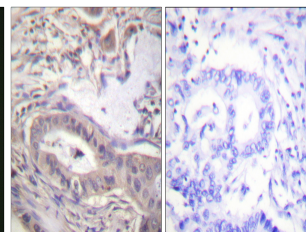
Gene ID	598
Gene Symbol	BCL2L1
Uniprot ID	B2CL1_HUMAN
Immunogen	The antiserum was produced against synthesized peptide derived from the human BCL-XL around the phosphorylation site of Thr47 at the amino acid range 13-62
Immunogen Region	13-62 aa
Specificity	Phospho-Bcl-x (T47) Polyclonal Antibody detects endogenous levels of Bcl-x protein only when phosphorylated at T47.
Immunogen Sequence	



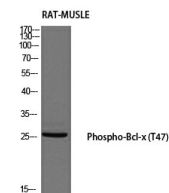
Western blot analysis of lysates from 293 cells treated with UV 30', using BCL-XL (Phospho-Thr47) Antibody. The lane on the right is blocked with the phosphopeptide.



Immunofluorescence analysis of NIH/3T3 cells, using BCL-XL (Phospho-Thr47) Antibody. The picture on the right is blocked with the phosphopeptide.



Immunohistochemistry analysis of paraffin-embedded human lung carcinoma, using BCL-XL (Phospho-Thr47) Antibody. The picture on the right is blocked with the phosphopeptide.



Western blot analysis of RAT-MUSCLE using Phospho-Bcl-x (T47) antibody. Antibody was diluted at 1:500