

Anti-Phospho-BCL2-Thr69 antibody (46-95 aa) (STJ90193)

STJ90193

GENERAL INFORMATION

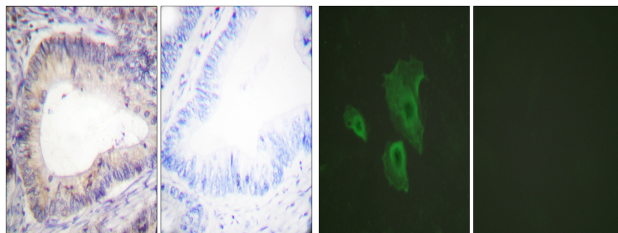
Product Type	Primary antibodies
Short Description	Rabbit polyclonal antibody anti-Phospho-Apoptosis regulator Bcl-2-Thr69 (46-95 aa) is suitable for use in Immunohistochemistry, Immunofluorescence and ELISA research applications.
Applications	IHC/IF/ELISA
Host/Source	Rabbit
Reactivity	Human/Rat/Mouse

PRODUCT PROPERTIES

Clonality	Polyclonal
Clone ID	
Concentration	1 mg/mL
Conjugation	Unconjugated
Purification	The antibody was affinity-purified from rabbit antiserum by affinity-chromatography using epitope-specific immunogen.
Dilution Range	IHC 1:100-1:300 IF 1:200-1:1000 ELISA 1:20000
Formulation	Liquid in PBS containing 50% Glycerol, 0.5% BSA and 0.02% Sodium Azide.
Isotype	IgG
Storage Instruction	Store at -20°C for up to 1 year from the date of receipt, and avoid repeat freeze-thaw cycles.

TARGET INFORMATION

Gene ID	596
Gene Symbol	BCL2
Uniprot ID	BCL2_HUMAN
Immunogen	The antiserum was produced against synthesized peptide derived from the human BCL-2 around the phosphorylation site of Thr69 at the amino acid range 46-95
Immunogen Region	46-95 aa
Specificity	Phospho-Bcl-2 (T69) Polyclonal Antibody detects endogenous levels of Bcl-2 protein only when phosphorylated at T69.
Immunogen Sequence	



Immunohistochemistry analysis of paraffin-embedded human colon carcinoma, using BCL-2 (Phospho-Thr69) Antibody. The picture on the right is blocked with the phospho peptide.

Immunofluorescence analysis of HeLa cells, using BCL-2 (Phospho-Thr69) Antibody. The picture on the right is blocked with the phospho peptide.