

Anti-Phospho-ATF2-Thr73 antibody (40-89 aa) (STJ90187)

STJ90187

GENERAL INFORMATION

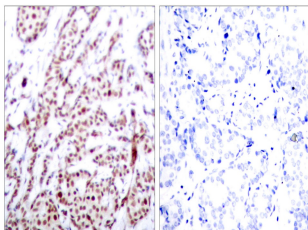
Product Type	Primary antibodies
Short Description	Rabbit polyclonal antibody anti-Phospho-Cyclic AMP-dependent transcription factor ATF-2-Thr73 (40-89 aa) is suitable for use in Western Blot, Immunohistochemistry, Immunofluorescence, Immunoprecipitation and ELISA research applications.
Applications	WB/IHC/IF/IP/ELISA
Host/Source	Rabbit
Reactivity	Human/Mouse/Rat

PRODUCT PROPERTIES

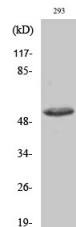
Clonality	Polyclonal
Clone ID	
Concentration	1 mg/mL
Conjugation	Unconjugated
Purification	The antibody was affinity-purified from rabbit antiserum by affinity-chromatography using epitope-specific immunogen.
Dilution Range	WB 1:500-1:2000 IHC 1:100-1:300 IP 2-5 ug mg/lysate ELISA 1:20000 IF 1:50-200
Formulation	Liquid in PBS containing 50% Glycerol, 0.5% BSA and 0.02% Sodium Azide.
Isotype	IgG
Storage	Store at -20°C for up to 1 year from the date of receipt, and avoid repeat freeze-thaw cycles.
Instruction	

TARGET INFORMATION

Gene ID	1386
Gene Symbol	ATF2
Uniprot ID	ATF2_HUMAN
Immunogen	The antiserum was produced against synthesized peptide derived from the human ATF2 around the phosphorylation site of Thr73 or 55 at the amino acid range 40-89
Immunogen Region	40-89 aa
Specificity	Phospho-ATF-2 (T73) Polyclonal Antibody detects endogenous levels of ATF-2 protein only when phosphorylated at T73.
Immunogen Sequence	



Immunohistochemistry analysis of paraffin-embedded human breast carcinoma, using ATF2 (Phospho-Thr73 or 55) Antibody. The picture on the right is blocked with the phospho peptide.



Western blot analysis of various cells using Phospho-ATF-2 (T73) Polyclonal Antibody