

Anti-Phospho-ATF2-Thr71 antibody (38-87 aa) (STJ90186)

STJ90186

GENERAL INFORMATION

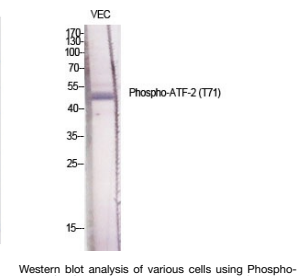
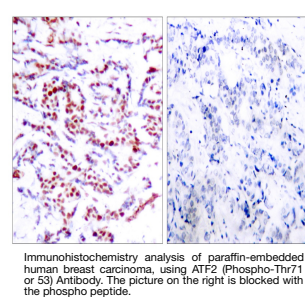
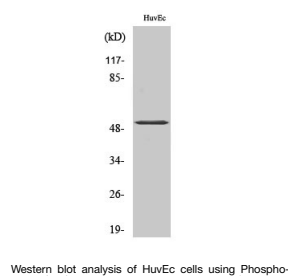
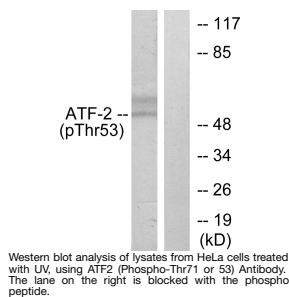
Product Type	Primary antibodies
Short Description	Rabbit polyclonal antibody anti-Phospho-Cyclic AMP-dependent transcription factor ATF-2-Thr71 (38-87 aa) is suitable for use in Western Blot, Immunohistochemistry, Immunofluorescence, Immunoprecipitation and ELISA research applications.
Applications	WB/IHC/IF/IP/ELISA
Host/Source	Rabbit
Reactivity	Human/Mouse/Rat

PRODUCT PROPERTIES

Clonality	Polyclonal
Clone ID	
Concentration	1 mg/mL
Conjugation	Unconjugated
Purification	The antibody was affinity-purified from rabbit antiserum by affinity-chromatography using epitope-specific immunogen.
Dilution	WB 1:500-1:2000
Range	IHC 1:100-1:300 IP 2-5 ug mg/lysate ELISA 1:20000 IF 1:50-200
Formulation	Liquid in PBS containing 50% Glycerol, 0.5% BSA and 0.02% Sodium Azide.
Isotype	IgG
Storage	Store at -20°C for up to 1 year from the date of receipt, and avoid repeat freeze-thaw cycles.
Instruction	

TARGET INFORMATION

Gene ID	1386
Gene Symbol	ATF2
Uniprot ID	ATF2_HUMAN
Immunogen	The antiserum was produced against synthesized peptide derived from the human ATF2 around the phosphorylation site of Thr71 or 53 at the amino acid range 38-87
Immunogen Region	38-87 aa
Specificity	Phospho-ATF-2 (T71) Polyclonal Antibody detects endogenous levels of ATF-2 protein only when phosphorylated at T71.
Immunogen Sequence	



This product is suitable for in-vitro studies under the RESEARCH USE ONLY [RUO] licence. This product must not be used as for diagnostic or other medical purposes.
St John's Laboratory Ltd, Knowledge Dock Business Centre, University Way, London, E16 2RD | Tel: 0208 223 3081