

Anti-Phospho-JUN-Ser243 antibody (210-259 aa) (STJ90172)

STJ90172

GENERAL INFORMATION

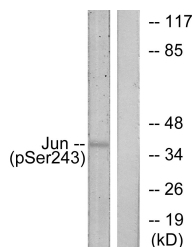
| | |
|--------------------------|--|
| Product Type | Primary antibodies |
| Short Description | Rabbit polyclonal antibody anti-Phospho-Transcription factor Jun-Ser243 (210-259 aa) is suitable for use in Western Blot, Immunohistochemistry, Immunofluorescence, Immunoprecipitation and ELISA research applications. |
| Applications | WB/IHC/IF/IP/ELISA |
| Host/Source | Rabbit |
| Reactivity | Human/Mouse/Rat |

PRODUCT PROPERTIES

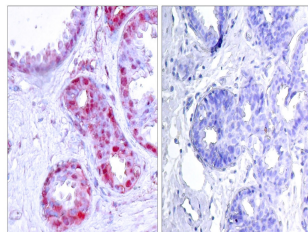
| | |
|-----------------------|---|
| Clonality | Polyclonal |
| Clone ID | |
| Concentration | 1 mg/mL |
| Conjugation | Unconjugated |
| Purification | The antibody was affinity-purified from rabbit antiserum by affinity-chromatography using epitope-specific immunogen. |
| Dilution Range | WB 1:500-1:2000 IHC 1:100-1:300 IP 2-5 ug mg/lysate ELISA 1:20000 IF 1:50-200 |
| Formulation | Liquid in PBS containing 50% Glycerol, 0.5% BSA and 0.02% Sodium Azide. |
| Isotype | IgG |
| Storage | Store at -20°C for up to 1 year from the date of receipt, and avoid repeat freeze-thaw cycles. |
| Instruction | |

TARGET INFORMATION

| | |
|---------------------------|---|
| Gene ID | 3725 |
| Gene Symbol | JUN |
| Uniprot ID | JUN_HUMAN |
| Immunogen | The antiserum was produced against synthesized peptide derived from the human c-Jun around the phosphorylation site of Ser243 at the amino acid range 210-259 |
| Immunogen Region | 210-259 aa |
| Specificity | Phospho-AP-1 (S243) Polyclonal Antibody detects endogenous levels of AP-1 protein only when phosphorylated at S243. |
| Immunogen Sequence | |



Western blot analysis of lysates from HeLa cells treated with UV, using c-Jun (Phospho-Ser243) Antibody. The lane on the right is blocked with the phospho peptide.



Immunohistochemistry analysis of paraffin-embedded human breast carcinoma, using c-Jun (Phospho-Ser243) Antibody. The picture on the right is blocked with the phospho peptide.