

Anti-Phospho-EIF4EBP1-Thr46 antibody (13-62 aa) (STJ90162)

STJ90162

GENERAL INFORMATION

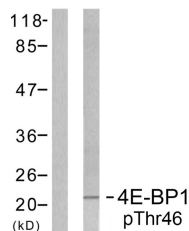
Product Type	Primary antibodies
Short Description	Rabbit polyclonal antibody anti-Phospho-Eukaryotic translation initiation factor 4E-binding protein 1-Thr46 (13-62 aa) is suitable for use in Western Blot, Immunohistochemistry, Immunofluorescence and ELISA research applications.
Applications	WB/IHC/IF/ELISA
Host/Source	Rabbit
Reactivity	Human/Mouse/Rat

PRODUCT PROPERTIES

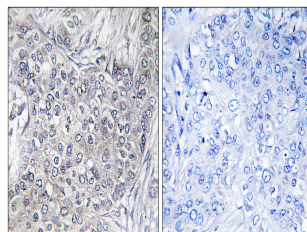
Clonality	Polyclonal
Clone ID	
Concentration	1 mg/mL
Conjugation	Unconjugated
Purification	The antibody was affinity-purified from rabbit antiserum by affinity-chromatography using epitope-specific immunogen.
Dilution	WB 1:500-1:2000
Range	IHC 1:100-1:300 ELISA 1:20000 IF 1:50-200
Formulation	Liquid in PBS containing 50% Glycerol, 0.5% BSA and 0.02% Sodium Azide.
Isotype	IgG
Storage Instruction	Store at -20°C for up to 1 year from the date of receipt, and avoid repeat freeze-thaw cycles.

TARGET INFORMATION

Gene ID	1978
Gene Symbol	EIF4EBP1
Uniprot ID	4EBP1_HUMAN
Immunogen	The antiserum was produced against synthesized peptide derived from the human 4E-BP1 around the phosphorylation site of Thr45 at the amino acid range 13-62
Immunogen Region	13-62 aa
Specificity	Phospho-4E-BP1 (T46) Polyclonal Antibody detects endogenous levels of 4E-BP1 protein only when phosphorylated at T46.
Immunogen Sequence	



Western blot analysis of lysates from MDA-MB-435 cells treated with EGF 200ng/ml 5', using 4E-BP1 (Phospho-Thr45) Antibody. The lane on the right is blocked with the phospho peptide.



Immunohistochemistry analysis of paraffin-embedded human breast carcinoma, using 4E-BP1 (Phospho-Thr45) Antibody. The picture on the right is blocked with the phospho peptide.