

Anti-Acetyl-BMAL1-Lys538 antibody (501-550 aa) (STJ90156)

STJ90156

GENERAL INFORMATION

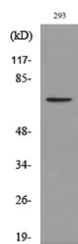
Product Type	Primary antibodies
Short Description	Rabbit polyclonal antibody anti-Acetyl-Basic helix-loop-helix ARNT-like protein 1-Lys538 (501-550 aa) is suitable for use in Western Blot and ELISA research applications.
Applications	WB/ELISA
Host/Source	Rabbit
Reactivity	Human/Mouse/Rat

PRODUCT PROPERTIES

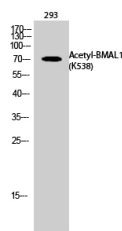
Clonality	Polyclonal
Clone ID	
Concentration	1 mg/mL
Conjugation	Unconjugated
Purification	The antibody was affinity-purified from rabbit antiserum by affinity-chromatography using epitope-specific immunogen.
Dilution Range	WB 1:500-1:2000 ELISA 1:20000
Formulation	Liquid in PBS containing 50% Glycerol, 0.5% BSA and 0.02% Sodium Azide.
Isotype	IgG
Storage	Store at -20°C for up to 1 year from the date of receipt, and avoid repeat freeze-thaw cycles.
Instruction	

TARGET INFORMATION

Gene ID	406
Gene Symbol	BMAL1
Uniprot ID	BMAL1_HUMAN
Immunogen	The antiserum was produced against synthesized Acetyl-peptide derived from the human BMAL1 around the Acetylation site of Lys538 at the amino acid range 501-550
Immunogen Region	501-550 aa
Specificity	Acetyl-BMAL1 (K538) Polyclonal Antibody detects endogenous levels of BMAL1 protein only when acetylated at K538.
Immunogen Sequence	



Western blot analysis of lysate from 293 cells, using BMAL1 (Acetyl-Lys538) Antibody.



Western blot analysis of 293 cells using Acetyl-BMAL1 (K538) Polyclonal Antibody. Secondary antibody was diluted at 1:20000

This product is suitable for in-vitro studies under the RESEARCH USE ONLY [RUO] licence. This product must not be used as for diagnostic or other medical purposes.
St John's Laboratory Ltd, Knowledge Dock Business Centre, University Way, London, E16 2RD | Tel: 0208 223 3081