

Anti-Acetyl-TUBA1A-Lys352 antibody (311-360 aa) (STJ90155)

STJ90155

GENERAL INFORMATION

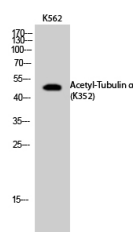
Product Type	Primary antibodies
Short Description	Rabbit polyclonal antibody anti-Acetyl-Tubulin alpha-1A chain-Lys352 (311-360 aa) is suitable for use in Western Blot and ELISA research applications.
Applications	WB/ELISA
Host/Source	Rabbit
Reactivity	Human/Mouse/Rat

PRODUCT PROPERTIES

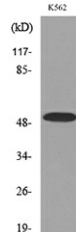
Clonality	Polyclonal
Clone ID	
Concentration	1 mg/mL
Conjugation	Unconjugated
Purification	The antibody was affinity-purified from rabbit antiserum by affinity-chromatography using epitope-specific immunogen.
Dilution Range	WB 1:500-1:2000 ELISA 1:20000
Formulation	Liquid in PBS containing 50% Glycerol, 0.5% BSA and 0.02% Sodium Azide.
Isotype	IgG
Storage	Store at -20°C for up to 1 year from the date of receipt, and avoid repeat freeze-thaw cycles.
Instruction	

TARGET INFORMATION

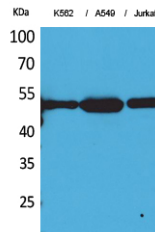
Gene ID	7846
Gene Symbol	TUBA1A
Uniprot ID	TBA1A_HUMAN
Immunogen	The antiserum was produced against synthesized Acetyl-peptide derived from the human TUBA1B around the Acetylation site of Lys352 at the amino acid range 311-360
Immunogen Region	311-360 aa
Specificity	Acetyl-Tubulin Alpha (K352) Polyclonal Antibody detects endogenous levels of Tubulin Alpha protein only when acetylated at K352.
Immunogen Sequence	



Western blot analysis of K562 cells using Acetyl-Tubulin Alpha (K352) Polyclonal Antibody. Secondary antibody was diluted at 1:20000



Western blot analysis of lysate from K562 cells, using TUBA1B (Acetyl-Lys352) Antibody.



Western blot analysis of K562, A549, Jurkat cells using Acetyl-Tubulin Alpha (K352) Polyclonal Antibody. Secondary antibody was diluted at 1:20000

This product is suitable for in-vitro studies under the RESEARCH USE ONLY [RUO] licence. This product must not be used as for diagnostic or other medical purposes.
St John's Laboratory Ltd, Knowledge Dock Business Centre, University Way, London, E16 2RD | Tel: 0208 223 3081