

Anti-Acetyl-CREBBP-Lys1535 antibody (1501-1550 aa) (STJ90134)

STJ90134

GENERAL INFORMATION

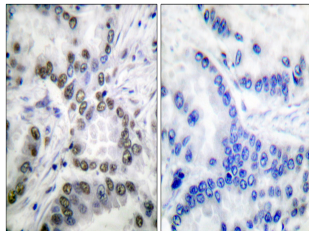
Product Type	Primary antibodies
Short Description	Rabbit polyclonal antibody anti-Acetyl-CREB-binding protein-Lys1535 (1501-1550 aa) is suitable for use in Western Blot, Immunohistochemistry, Immunofluorescence and ELISA research applications.
Applications	WB/IHC/IF/ELISA
Host/Source	Rabbit
Reactivity	Human/Mouse/Rat

PRODUCT PROPERTIES

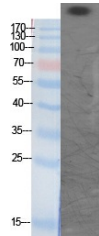
Clonality	Polyclonal
Clone ID	
Concentration	1 mg/mL
Conjugation	Unconjugated
Purification	The antibody was affinity-purified from rabbit antiserum by affinity-chromatography using epitope-specific immunogen.
Dilution	WB 1:500-1:2000
Range	IHC 1:100-1:300 ELISA 1:20000 IF 1:50-200
Formulation	Liquid in PBS containing 50% Glycerol, 0.5% BSA and 0.02% Sodium Azide.
Isotype	IgG
Storage Instruction	Store at -20°C for up to 1 year from the date of receipt, and avoid repeat freeze-thaw cycles.

TARGET INFORMATION

Gene ID	1387
Gene Symbol	CREBBP
Uniprot ID	CBP_HUMAN
Immunogen	The antiserum was produced against synthesized peptide derived from the human CBP around the acetylated site of Lys1535 at the amino acid range 1501-1550
Immunogen Region	1501-1550 aa
Specificity	Acetyl-CBP (K1535) Polyclonal Antibody detects endogenous levels of CBP protein only when acetylated at K1535.
Immunogen Sequence	



Immunohistochemistry analysis of paraffin-embedded human lung carcinoma tissue, using CBP (Acetyl-Lys1535) Antibody. The picture on the right is blocked with the synthesized peptide.



Western blot analysis of various cells using Acetyl-CBP (K1535) Polyclonal Antibody diluted at 1/1000. Secondary antibody was diluted at 1:20000

This product is suitable for in-vitro studies under the RESEARCH USE ONLY [RUO] licence. This product must not be used as for diagnostic or other medical purposes.
St John's Laboratory Ltd, Knowledge Dock Business Centre, University Way, London, E16 2RD | Tel: 0208 223 3081