

## Anti-Acetyl-H2BC12L-Lys15 antibody (1-50 aa) (STJ90120)

STJ90120

### GENERAL INFORMATION

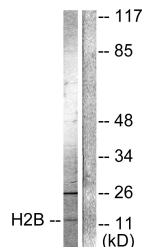
<b>Product Type</b>	Primary antibodies
<b>Short Description</b>	Rabbit polyclonal antibody anti-Acetyl-Histone H2B type F-S-Lys15 (1-50 aa) is suitable for use in Western Blot, Immunohistochemistry, Immunofluorescence and ELISA research applications.
<b>Applications</b>	WB/IHC/IF/ELISA
<b>Host/Source</b>	Rabbit
<b>Reactivity</b>	Human/Mouse

### PRODUCT PROPERTIES

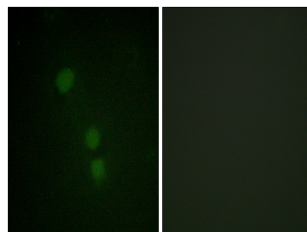
<b>Clonality</b>	Polyclonal
<b>Clone ID</b>	
<b>Concentration</b>	1 mg/mL
<b>Conjugation</b>	Unconjugated
<b>Purification</b>	The antibody was affinity-purified from rabbit antiserum by affinity-chromatography using epitope-specific immunogen.
<b>Dilution Range</b>	WB 1:500-1:2000 IHC 1:100-1:300 IF 1:200-1:1000 ELISA 1:5000
<b>Formulation</b>	Liquid in PBS containing 50% Glycerol, 0.5% BSA and 0.02% Sodium Azide.
<b>Isotype</b>	IgG
<b>Storage</b>	Store at -20°C for up to 1 year from the date of receipt, and avoid repeat freeze-thaw cycles.
<b>Instruction</b>	

### TARGET INFORMATION

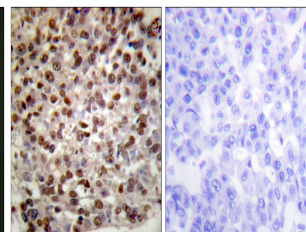
<b>Gene ID</b>	102724334
<b>Gene Symbol</b>	H2BC12L
<b>Uniprot ID</b>	H2BFS_HUMAN
<b>Immunogen</b>	The antiserum was produced against synthesized peptide derived from the human Histone H2B around the acetylated site of Lys15 at the amino acid range 1-50
<b>Immunogen Region</b>	1-50 aa
<b>Specificity</b>	Acetyl-Histone H2B (K15) Polyclonal Antibody detects endogenous levels of Histone H2B protein only when acetylated at K15.
<b>Immunogen Sequence</b>	



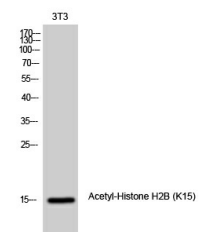
Western blot analysis of lysates from Raw264.7 cells, treated with TSA 400nM 24h, using Histone H2B (Acetyl-Lys15) Antibody. The lane on the right is blocked with the synthesized peptide.



Immunofluorescence analysis of HeLa cells, using Histone H2B (Acetyl-Lys15) Antibody. The picture on the right is blocked with the synthesized peptide.



Immunohistochemistry analysis of paraffin-embedded human breast carcinoma tissue, using Histone H2B (Acetyl-Lys15) Antibody. The picture on the right is blocked with the synthesized peptide.



Western blot analysis of 3T3 cells using Acetyl-Histone H2B (K15) Polyclonal Antibody diluted at 1:1000. Secondary antibody was diluted at 1:20000.

This product is suitable for in-vitro studies under the RESEARCH USE ONLY [RUO] licence. This product must not be used as for diagnostic or other medical purposes.  
St John's Laboratory Ltd, Knowledge Dock Business Centre, University Way, London, E16 2RD | Tel: 0208 223 3081