

Anti-Mono-Methyl-Histone H3-Lys80 antibody (STJ90113)

STJ90113

GENERAL INFORMATION

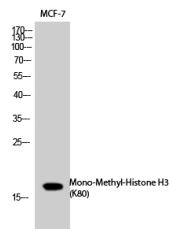
Product Type	Primary antibodies
Short Description	Rabbit polyclonal antibody anti-Mono-Methyl-Histone H3.1/Histone H3.2/Histone H3.3/Histone H3.3C-Lys80 is suitable for use in Western Blot and ELISA research applications.
Applications	WB/ELISA
Host/Source	Rabbit
Reactivity	Human/Mouse/Rat

PRODUCT PROPERTIES

Clonality	Polyclonal
Clone ID	
Concentration	1 mg/mL
Conjugation	Unconjugated
Purification	The antibody was affinity-purified from rabbit antiserum by affinity-chromatography using epitope-specific immunogen.
Dilution Range	WB 1:500-1:2000 ELISA 1:20000
Formulation	Liquid in PBS containing 50% Glycerol, 0.5% BSA and 0.02% Sodium Azide.
Isotype	IgG
Storage	Store at -20°C for up to 1 year from the date of receipt, and avoid repeat freeze-thaw cycles.
Instruction	

TARGET INFORMATION

Gene ID	3020/3021 8350/8351/8352/8353/8354/8355/8356/8357/8358/8968
Gene Symbol	H3-3A.H3-3B H3C1.H3C2.H
Uniprot ID	H33_HUMAN H31_HUMAN H32_HUMAN <
Immunogen	Synthesized peptide derived from the human Histone H3 around the mono-methylation site of K80.
Immunogen Region	
Specificity	Mono-Methyl-Histone H3 (K80) Polyclonal Antibody detects endogenous levels of Histone H3 protein only when mono-methylated at K80.
Immunogen Sequence	



Western blot analysis of MCF-7 cells using Mono-Methyl-Histone H3 (K80) Polyclonal Antibody. Secondary antibody was diluted at 1:20000

This product is suitable for in-vitro studies under the RESEARCH USE ONLY [RUO] licence. This product must not be used as for diagnostic or other medical purposes.
St John's Laboratory Ltd, Knowledge Dock Business Centre, University Way, London, E16 2RD | Tel: 0208 223 3081