

Anti-Cleaved-F2R-S42 antibody (23-72 aa) (STJ90103)

STJ90103

GENERAL INFORMATION

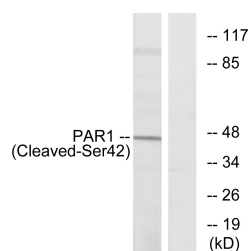
Product Type	Primary antibodies
Short Description	Rabbit polyclonal antibody anti-Cleaved-Proteinase-activated receptor 1-S42 (23-72 aa) is suitable for use in Western Blot and ELISA research applications.
Applications	WB/ELISA
Host/Source	Rabbit
Reactivity	Human/Rat/Mouse

PRODUCT PROPERTIES

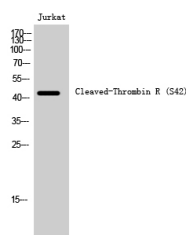
Clonality	Polyclonal
Clone ID	
Concentration	1 mg/mL
Conjugation	Unconjugated
Purification	The antibody was affinity-purified from rabbit antiserum by affinity-chromatography using epitope-specific immunogen.
Dilution Range	WB 1:500-1:2000 ELISA 1:20000
Formulation	Liquid in PBS containing 50% Glycerol, 0.5% BSA and 0.02% Sodium Azide.
Isotype	IgG
Storage	Store at -20°C for up to 1 year from the date of receipt, and avoid repeat freeze-thaw cycles.
Instruction	

TARGET INFORMATION

Gene ID	2149
Gene Symbol	F2R
Uniprot ID	PAR1_HUMAN
Immunogen	The antiserum was produced against synthesized peptide derived from the human PAR1 at the amino acid range 23-72
Immunogen Region	23-72 aa
Specificity	Cleaved-Thrombin R (S42) Polyclonal Antibody detects endogenous levels of fragment of activated Thrombin R protein resulting from cleavage adjacent to S42.
Immunogen Sequence	



Western blot analysis of lysates from Jurkat cells, using PAR1 (Cleaved-Ser42) Antibody. The lane on the right is blocked with the synthesized peptide.



Western blot analysis of Jurkat cells using Cleaved-Thrombin R (S42) Polyclonal Antibody

This product is suitable for in-vitro studies under the RESEARCH USE ONLY [RUO] licence. This product must not be used as for diagnostic or other medical purposes.
St John's Laboratory Ltd, Knowledge Dock Business Centre, University Way, London, E16 2RD | Tel: 0208 223 3081