

Anti-Cleaved-KLKB1-R390 antibody (341-390 aa) (STJ90101)

STJ90101

GENERAL INFORMATION

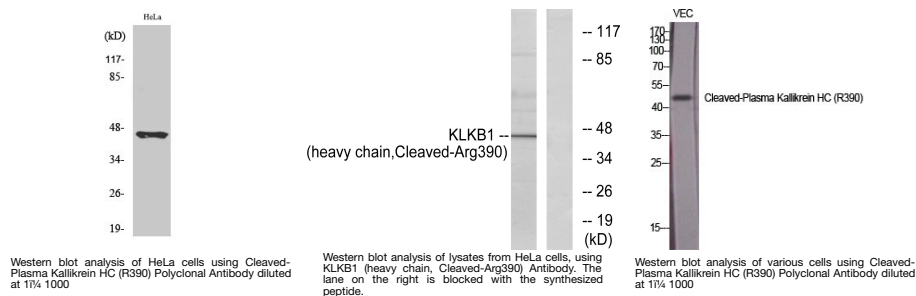
Product Type	Primary antibodies
Short Description	Rabbit polyclonal antibody anti-Cleaved-Plasma kallikrein-R390 (341-390 aa) is suitable for use in Western Blot, Immunohistochemistry, Immunofluorescence and ELISA research applications.
Applications	WB/IHC/IF/ELISA
Host/Source	Rabbit
Reactivity	Human/Rat/Mouse

PRODUCT PROPERTIES

Clonality	Polyclonal
Clone ID	
Concentration	1 mg/mL
Conjugation	Unconjugated
Purification	The antibody was affinity-purified from rabbit antiserum by affinity-chromatography using epitope-specific immunogen.
Dilution Range	WB 1:500-1:2000 IHC 1:100-1:300 ELISA 1:10000 IF 1:50-200
Formulation	Liquid in PBS containing 50% Glycerol, 0.5% BSA and 0.02% Sodium Azide.
Isotype	IgG
Storage Instruction	Store at -20°C for up to 1 year from the date of receipt, and avoid repeat freeze-thaw cycles.

TARGET INFORMATION

Gene ID	3818
Gene Symbol	KLKB1
Uniprot ID	KLKB1_HUMAN
Immunogen	The antiserum was produced against synthesized peptide derived from the human KLKB1 at the amino acid range 341-390
Immunogen Region	341-390 aa
Specificity	Cleaved-Plasma Kallikrein HC (R390) Polyclonal Antibody detects endogenous levels of fragment of activated Plasma Kallikrein HC protein resulting from cleavage adjacent to R390.
Immunogen Sequence	



This product is suitable for in-vitro studies under the RESEARCH USE ONLY [RUO] licence. This product must not be used as for diagnostic or other medical purposes.
St John's Laboratory Ltd, Knowledge Dock Business Centre, University Way, London, E16 2RD | Tel: 0208 223 3081