

Anti-Cleaved-PARP1-D214 antibody (165-214 aa) (STJ90100)

STJ90100

GENERAL INFORMATION

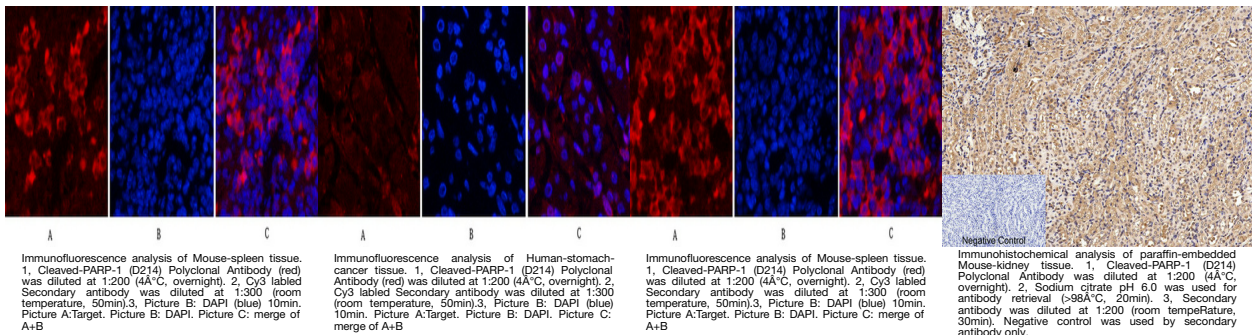
Product Type	Primary antibodies
Short Description	Rabbit polyclonal antibody anti-Cleaved-Poly polymerase 1 ADP-ribosyltransferase 1 polymerase 1, processed C-terminus; Poly polymerase 1, processed N-terminus-D214 (165-214 aa) is suitable for use in Western Blot, Immunohistochemistry, Immunofluoresc
Applications	WB/IHC/IF/ELISA
Host/Source	Rabbit
Reactivity	Human/Mouse

PRODUCT PROPERTIES

Clonality	Polyclonal
Clone ID	
Concentration	1 mg/mL
Conjugation	Unconjugated
Purification	The antibody was affinity-purified from rabbit antiserum by affinity-chromatography using epitope-specific immunogen.
Dilution Range	WB 1:500-2000 IF 1:50-300 IHC 1:50-300
Formulation	Liquid in PBS containing 50% Glycerol, 0.5% BSA and 0.02% Sodium Azide.
Isotype	IgG
Storage Instruction	Store at -20°C for up to 1 year from the date of receipt, and avoid repeat freeze-thaw cycles.

TARGET INFORMATION

Gene ID	142
Gene Symbol	PARP1
Uniprot ID	PARP1_HUMAN
Immunogen	The antiserum was produced against synthesized peptide derived from the human PARP at the amino acid range 165-214
Immunogen Region	165-214 aa
Specificity	Cleaved-PARP-1 (D214) Polyclonal Antibody detects endogenous levels of fragment of activated PARP-1 protein resulting from cleavage adjacent to D214.
Immunogen Sequence	



This product is suitable for in-vitro studies under the RESEARCH USE ONLY [RUO] licence. This product must not be used as for diagnostic or other medical purposes.
 St John's Laboratory Ltd, Knowledge Dock Business Centre, University Way, London, E16 2RD | Tel: 0208 223 3081