

Anti-Cleaved-ITIH1-D672 antibody (623-672 aa) (STJ90092)

STJ90092

GENERAL INFORMATION

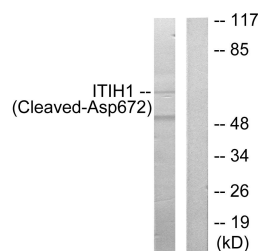
Product Type	Primary antibodies
Short Description	Rabbit polyclonal antibody anti-Cleaved-Inter-alpha-trypsin inhibitor heavy chain H1-D672 (623-672 aa) is suitable for use in Western Blot and ELISA research applications.
Applications	WB/ELISA
Host/Source	Rabbit
Reactivity	Human/Mouse

PRODUCT PROPERTIES

Clonality	Polyclonal
Clone ID	
Concentration	1 mg/mL
Conjugation	Unconjugated
Purification	The antibody was affinity-purified from rabbit antiserum by affinity-chromatography using epitope-specific immunogen.
Dilution Range	WB 1:500-1:2000 ELISA 1:20000
Formulation	Liquid in PBS containing 50% Glycerol, 0.5% BSA and 0.02% Sodium Azide.
Isotype	IgG
Storage	Store at -20°C for up to 1 year from the date of receipt, and avoid repeat freeze-thaw cycles.
Instruction	

TARGET INFORMATION

Gene ID	3697
Gene Symbol	ITIH1
Uniprot ID	ITIH1_HUMAN
Immunogen	The antiserum was produced against synthesized peptide derived from the human ITIH1 at the amino acid range 623-672
Immunogen Region	623-672 aa
Specificity	Cleaved-ITI-H1 (D672) Polyclonal Antibody detects endogenous levels of fragment of activated ITI-H1 protein resulting from cleavage adjacent to D672.
Immunogen Sequence	



Western blot analysis of lysates from Jurkat cells, treated with etoposide 25uM 24h, using ITIH1 (Cleaved-Asp672) Antibody. The lane on the right is blocked with the synthesized peptide.