

Anti-Cleaved-ITGA6-E942 antibody (923-972 aa) (STJ90089)

STJ90089

GENERAL INFORMATION

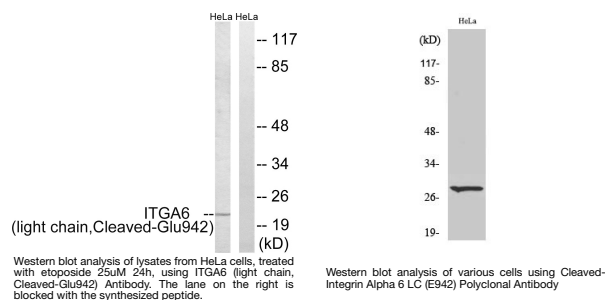
Product Type	Primary antibodies
Short Description	Rabbit polyclonal antibody anti-Cleaved-Integrin alpha-6-E942 (923-972 aa) is suitable for use in Western Blot and ELISA research applications.
Applications	WB/ELISA
Host/Source	Rabbit
Reactivity	Human/Rat/Mouse

PRODUCT PROPERTIES

Clonality	Polyclonal
Clone ID	
Concentration	1 mg/mL
Conjugation	Unconjugated
Purification	The antibody was affinity-purified from rabbit antiserum by affinity-chromatography using epitope-specific immunogen.
Dilution Range	WB 1:500-1:2000 ELISA 1:10000
Formulation	Liquid in PBS containing 50% Glycerol, 0.5% BSA and 0.02% Sodium Azide.
Isotype	IgG
Storage	Store at -20°C for up to 1 year from the date of receipt, and avoid repeat freeze-thaw cycles.
Instruction	

TARGET INFORMATION

Gene ID	3655
Gene Symbol	ITGA6
Uniprot ID	ITA6_HUMAN
Immunogen	The antiserum was produced against synthesized peptide derived from the human ITGA6 at the amino acid range 923-972
Immunogen Region	923-972 aa
Specificity	Cleaved-Integrin Alpha 6 LC (E942) Polyclonal Antibody detects endogenous levels of fragment of activated Integrin Alpha 6 LC protein resulting from cleavage adjacent to E942.
Immunogen Sequence	



This product is suitable for in-vitro studies under the RESEARCH USE ONLY [RUO] licence. This product must not be used as for diagnostic or other medical purposes.
St John's Laboratory Ltd, Knowledge Dock Business Centre, University Way, London, E16 2RD | Tel: 0208 223 3081