

Anti-Cleaved-ITGA5-E895 antibody (876-925 aa) (STJ90088)

STJ90088

GENERAL INFORMATION

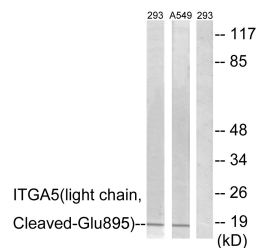
Product Type	Primary antibodies
Short Description	Rabbit polyclonal antibody anti-Cleaved-Integrin alpha-5-E895 (876-925 aa) is suitable for use in Western Blot and ELISA research applications.
Applications	WB/ELISA
Host/Source	Rabbit
Reactivity	Human/Rat/Mouse

PRODUCT PROPERTIES

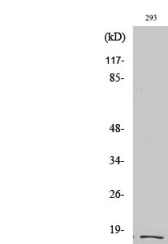
Clonality	Polyclonal
Clone ID	
Concentration	1 mg/mL
Conjugation	Unconjugated
Purification	The antibody was affinity-purified from rabbit antiserum by affinity-chromatography using epitope-specific immunogen.
Dilution Range	WB 1:500-1:2000 ELISA 1:20000
Formulation	Liquid in PBS containing 50% Glycerol, 0.5% BSA and 0.02% Sodium Azide.
Isotype	IgG
Storage	Store at -20°C for up to 1 year from the date of receipt, and avoid repeat freeze-thaw cycles.
Instruction	

TARGET INFORMATION

Gene ID	3678
Gene Symbol	ITGA5
Uniprot ID	ITA5_HUMAN
Immunogen	The antiserum was produced against synthesized peptide derived from the human ITGA5 at the amino acid range 876-925
Immunogen Region	876-925 aa
Specificity	Cleaved-Integrin Alpha 5 LC (E895) Polyclonal Antibody detects endogenous levels of fragment of activated Integrin Alpha 5 LC protein resulting from cleavage adjacent to E895.
Immunogen Sequence	



Western blot analysis of lysates from 293 and A549 cells, treated with etoposide 25uM 1h, using ITGA5 (light chain, Cleaved-Glu895) Antibody. The lane on the right is blocked with the synthesized peptide.



Western blot analysis of various cells using Cleaved-Integrin Alpha 5 LC (E895) Polyclonal Antibody