

Anti-Cleaved-F10-I235 antibody (216-265 aa) (STJ90082)

STJ90082

GENERAL INFORMATION

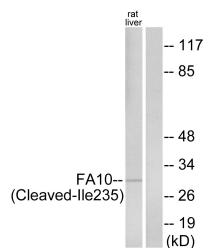
Product Type	Primary antibodies
Short Description	Rabbit polyclonal antibody anti-Cleaved-Coagulation factor X-I235 (216-265 aa) is suitable for use in Western Blot and ELISA research applications.
Applications	WB/ELISA
Host/Source	Rabbit
Reactivity	Human/Mouse/Rat

PRODUCT PROPERTIES

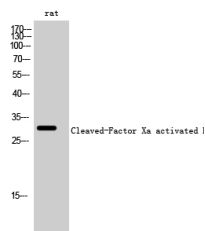
Clonality	Polyclonal
Clone ID	
Concentration	1 mg/mL
Conjugation	Unconjugated
Purification	The antibody was affinity-purified from rabbit antiserum by affinity-chromatography using epitope-specific immunogen.
Dilution Range	WB 1:500-1:2000 ELISA 1:20000
Formulation	Liquid in PBS containing 50% Glycerol, 0.5% BSA and 0.02% Sodium Azide.
Isotype	IgG
Storage	Store at -20°C for up to 1 year from the date of receipt, and avoid repeat freeze-thaw cycles.
Instruction	

TARGET INFORMATION

Gene ID	2159
Gene Symbol	F10
Uniprot ID	FA10_HUMAN
Immunogen	The antiserum was produced against synthesized peptide derived from the human FA10 at the amino acid range 216-265
Immunogen Region	216-265 aa
Specificity	Cleaved-Factor Xa activated HC (I235) Polyclonal Antibody detects endogenous levels of fragment of activated Factor Xa activated HC protein resulting from cleavage adjacent to I235.
Immunogen Sequence	



Western blot analysis of lysates from rat liver cells, using FA10 (activated heavy chain, Cleaved-Ile235) Antibody. The lane on the right is blocked with the synthesized peptide.



Western blot analysis of rat cells using Cleaved-Factor Xa activated HC (I235) Polyclonal Antibody

This product is suitable for in-vitro studies under the RESEARCH USE ONLY [RUO] licence. This product must not be used as for diagnostic or other medical purposes.
St John's Laboratory Ltd, Knowledge Dock Business Centre, University Way, London, E16 2RD | Tel: 0208 223 3081