

Anti-Cleaved-F7-R212 antibody (171-220 aa) (STJ90080)

STJ90080

GENERAL INFORMATION

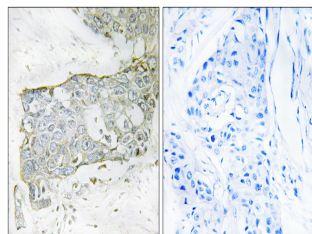
Product Type	Primary antibodies
Short Description	Rabbit polyclonal antibody anti-Cleaved-Coagulation factor VII-R212 (171-220 aa) is suitable for use in Western Blot, Immunohistochemistry, Immunofluorescence and ELISA research applications.
Applications	WB/IHC/IF/ELISA
Host/Source	Rabbit
Reactivity	Human/Rat/Mouse

PRODUCT PROPERTIES

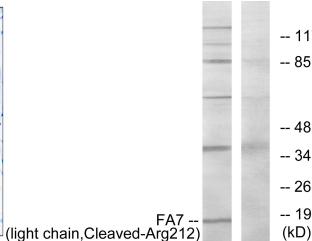
Clonality	Polyclonal
Clone ID	
Concentration	1 mg/mL
Conjugation	Unconjugated
Purification	The antibody was affinity-purified from rabbit antiserum by affinity-chromatography using epitope-specific immunogen.
Dilution Range	WB 1:500-1:2000 IHC 1:100-1:300 ELISA 1:20000 IF 1:50-200
Formulation	Liquid in PBS containing 50% Glycerol, 0.5% BSA and 0.02% Sodium Azide.
Isotype	IgG
Storage Instruction	Store at -20°C for up to 1 year from the date of receipt, and avoid repeat freeze-thaw cycles.

TARGET INFORMATION

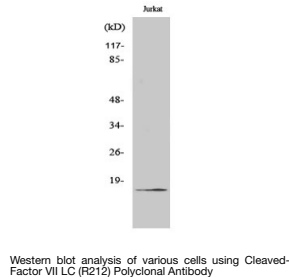
Gene ID	2155
Gene Symbol	F7
Uniprot ID	FA7_HUMAN
Immunogen	The antiserum was produced against synthesized peptide derived from the human FA7 at the amino acid range 171-220
Immunogen Region	171-220 aa
Specificity	Cleaved-Factor VII LC (R212) Polyclonal Antibody detects endogenous levels of fragment of activated Factor VII LC protein resulting from cleavage adjacent to R212.
Immunogen Sequence	



Immunohistochemistry analysis of paraffin-embedded human breast carcinoma tissue, using FA7 (light chain, Cleaved-Arg212) Antibody. The picture on the right is blocked with the synthesized peptide.



Western blot analysis of lysates from Jurkat cells, treated with eto 25uM 24h, using FA7 (light chain, Cleaved-Arg212) Antibody. The lane on the right is blocked with the synthesized peptide.



Western blot analysis of various cells using Cleaved-Factor VII LC (R212) Polyclonal Antibody