

## Anti-Cleaved-F2-R327 antibody (278-327 aa) (STJ90076)

STJ90076

### GENERAL INFORMATION

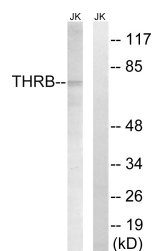
<b>Product Type</b>	Primary antibodies
<b>Short Description</b>	Rabbit polyclonal antibody anti-Cleaved-Prothrombin-R327 (278-327 aa) is suitable for use in Western Blot and ELISA research applications.
<b>Applications</b>	WB/ELISA
<b>Host/Source</b>	Rabbit
<b>Reactivity</b>	Human/Rat/Mouse

### PRODUCT PROPERTIES

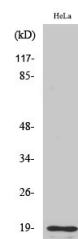
<b>Clonality</b>	Polyclonal
<b>Clone ID</b>	
<b>Concentration</b>	1 mg/mL
<b>Conjugation</b>	Unconjugated
<b>Purification</b>	The antibody was affinity-purified from rabbit antiserum by affinity-chromatography using epitope-specific immunogen.
<b>Dilution Range</b>	WB 1:500-1:2000 ELISA 1:20000
<b>Formulation</b>	Liquid in PBS containing 50% Glycerol, 0.5% BSA and 0.02% Sodium Azide.
<b>Isotype</b>	IgG
<b>Storage</b>	Store at -20°C for up to 1 year from the date of receipt, and avoid repeat freeze-thaw cycles.
<b>Instruction</b>	

### TARGET INFORMATION

<b>Gene ID</b>	2147
<b>Gene Symbol</b>	F2
<b>Uniprot ID</b>	THRB_HUMAN
<b>Immunogen</b>	The antiserum was produced against synthesized peptide derived from the human THRB at the amino acid range 278-327
<b>Immunogen Region</b>	278-327 aa
<b>Specificity</b>	Cleaved-Thrombin APII (R327) Polyclonal Antibody detects endogenous levels of fragment of activated Thrombin APII protein resulting from cleavage adjacent to R327.
<b>Immunogen Sequence</b>	



Western blot analysis of lysates from Jurkat cells, treated with stoposide 25uM 24h, using THRB (AP2, Cleaved-Arg327) Antibody. The lane on the right is blocked with the synthesized peptide.



Western blot analysis of various cells using Cleaved-Thrombin APII (R327) Polyclonal Antibody