

Anti-Cleaved-ADAM17-R215 antibody (196-245 aa) (STJ90075)

STJ90075

GENERAL INFORMATION

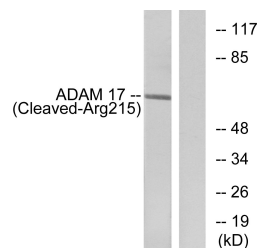
Product Type	Primary antibodies
Short Description	Rabbit polyclonal antibody anti-Cleaved-Disintegrin and metalloproteinase domain-containing protein 17-R215 (196-245 aa) is suitable for use in Western Blot and ELISA research applications.
Applications	WB/ELISA
Host/Source	Rabbit
Reactivity	Human/Rat/Mouse

PRODUCT PROPERTIES

Clonality	Polyclonal
Clone ID	
Concentration	1 mg/mL
Conjugation	Unconjugated
Purification	The antibody was affinity-purified from rabbit antiserum by affinity-chromatography using epitope-specific immunogen.
Dilution Range	WB 1:500-1:2000 ELISA 1:20000
Formulation	Liquid in PBS containing 50% Glycerol, 0.5% BSA and 0.02% Sodium Azide.
Isotype	IgG
Storage	Store at -20°C for up to 1 year from the date of receipt, and avoid repeat freeze-thaw cycles.
Instruction	

TARGET INFORMATION

Gene ID	6868
Gene Symbol	ADAM17
Uniprot ID	ADA17_HUMAN
Immunogen	The antiserum was produced against synthesized peptide derived from the human ADAM 17 at the amino acid range 196-245
Immunogen Region	196-245 aa
Specificity	Cleaved-TACE (R215) Polyclonal Antibody detects endogenous levels of fragment of activated TACE protein resulting from cleavage adjacent to R215.
Immunogen Sequence	



Western blot analysis of lysates from rat liver cells, using ADAM 17 (Cleaved-Arg215) Antibody. The lane on the right is blocked with the synthesized peptide.