

## Anti-Cleaved-NOTCH2-V1697 antibody (1678-1727 aa) (STJ90069)

STJ90069

### GENERAL INFORMATION

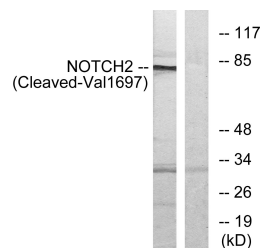
<b>Product Type</b>	Primary antibodies
<b>Short Description</b>	Rabbit polyclonal antibody anti-Cleaved-Neurogenic locus notch homolog protein 2-V1697 (1678-1727 aa) is suitable for use in Western Blot and ELISA research applications.
<b>Applications</b>	WB/ELISA
<b>Host/Source</b>	Rabbit
<b>Reactivity</b>	Human/Mouse/Rat

### PRODUCT PROPERTIES

<b>Clonality</b>	Polyclonal
<b>Clone ID</b>	
<b>Concentration</b>	1 mg/mL
<b>Conjugation</b>	Unconjugated
<b>Purification</b>	The antibody was affinity-purified from rabbit antiserum by affinity-chromatography using epitope-specific immunogen.
<b>Dilution Range</b>	WB 1:500-1:2000 ELISA 1:10000
<b>Formulation</b>	Liquid in PBS containing 50% Glycerol, 0.5% BSA and 0.02% Sodium Azide.
<b>Isotype</b>	IgG
<b>Storage</b>	Store at -20°C for up to 1 year from the date of receipt, and avoid repeat freeze-thaw cycles.
<b>Instruction</b>	

### TARGET INFORMATION

<b>Gene ID</b>	4853
<b>Gene Symbol</b>	NOTCH2
<b>Uniprot ID</b>	NOTC2_HUMAN
<b>Immunogen</b>	The antiserum was produced against synthesized peptide derived from the human NOTCH2 at the amino acid range 1678-1727
<b>Immunogen Region</b>	1678-1727 aa
<b>Specificity</b>	Cleaved-Notch 2 (V1697) Polyclonal Antibody detects endogenous levels of fragment of activated Notch 2 protein resulting from cleavage adjacent to V1697.
<b>Immunogen Sequence</b>	



Western blot analysis of lysates from Jurkat cells, treated with etoposide 25uM 24h, using NOTCH2 (Cleaved-Val1697) Antibody. The lane on the right is blocked with the synthesized peptide.