

Anti-Cleaved-NOTCH2-D1733 antibody (1684-1733 aa) (STJ90068)

STJ90068

GENERAL INFORMATION

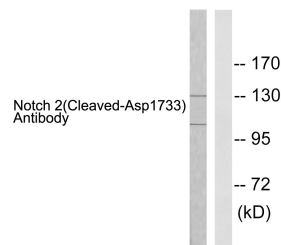
Product Type	Primary antibodies
Short Description	Rabbit polyclonal antibody anti-Cleaved-Neurogenic locus notch homolog protein 2-D1733 (1684-1733 aa) is suitable for use in Immunofluorescence, Western Blot, Immunohistochemistry and ELISA research applications.
Applications	IF/WB/IHC/ELISA
Host/Source	Rabbit
Reactivity	Human/Mouse/Rat

PRODUCT PROPERTIES

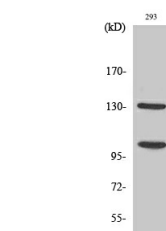
Clonality	Polyclonal
Clone ID	
Concentration	1 mg/mL
Conjugation	Unconjugated
Purification	The antibody was affinity-purified from rabbit antiserum by affinity-chromatography using epitope-specific immunogen.
Dilution	IF 1:50-200
Range	WB 1:500-1:2000 IHC 1:100-1:300 ELISA 1:40000
Formulation	Liquid in PBS containing 50% Glycerol, 0.5% BSA and 0.02% Sodium Azide.
Isotype	IgG
Storage Instruction	Store at -20°C for up to 1 year from the date of receipt, and avoid repeat freeze-thaw cycles.

TARGET INFORMATION

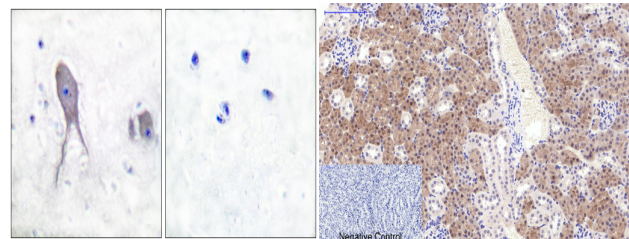
Gene ID	4853
Gene Symbol	NOTCH2
Uniprot ID	NOTC2_HUMAN
Immunogen	The antiserum was produced against synthesized peptide derived from the human Notch 2 at the amino acid range 1684-1733
Immunogen	1684-1733 aa
Region	
Specificity	Cleaved-Notch 2 (D1733) Polyclonal Antibody detects endogenous levels of fragment of activated Notch 2 protein resulting from cleavage adjacent to D1733.
Immunogen Sequence	



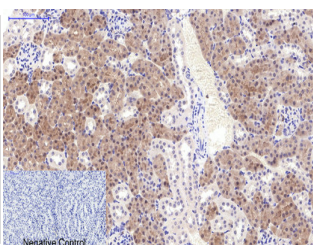
Western blot analysis of lysates from 293 cells, treated with TNF-α 20ng/ml 30', using Notch 2 (Cleaved-Asp1733) Antibody. The lane on the right is blocked with the synthesized peptide.



Western blot analysis of 293 cells using Cleaved-Notch 2 (D1733) Polyclonal Antibody diluted at 1:1k 500.



Immunohistochemistry analysis of paraffin-embedded human brain tissue, using Notch 2 (Cleaved-Asp1733) Antibody. The picture on the right is blocked with the synthesized peptide.



Immunohistochemical analysis of paraffin-embedded Mouse-kidney tissue. 1. Cleaved-Notch 2 (D1733) Polyclonal Antibody was diluted at 1:200 (4A°C, overnight). 2. Sodium citrate pH 6.0 was used for antibody retrieval (>96A°C, 20min). 3. Secondary antibody was diluted at 1:200 (room temperature, 30min). Negative control was used by secondary antibody only.

This product is suitable for in-vitro studies under the RESEARCH USE ONLY [RUO] licence. This product must not be used as for diagnostic or other medical purposes.

St John's Laboratory Ltd, Knowledge Dock Business Centre, University Way, London, E16 2RD | Tel: 0208 223 3081