

Anti-Cleaved-ADGRE5-S531 antibody (512-561 aa) (STJ90047)

STJ90047

GENERAL INFORMATION

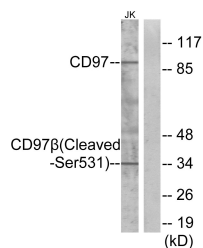
Product Type	Primary antibodies
Short Description	Rabbit polyclonal antibody anti-Cleaved-Adhesion G protein-coupled receptor E5-S531 (512-561 aa) is suitable for use in Western Blot and ELISA research applications.
Applications	WB/ELISA
Host/Source	Rabbit
Reactivity	Human/Rat/Mouse

PRODUCT PROPERTIES

Clonality	Polyclonal
Clone ID	
Concentration	1 mg/mL
Conjugation	Unconjugated
Purification	The antibody was affinity-purified from rabbit antiserum by affinity-chromatography using epitope-specific immunogen.
Dilution Range	WB 1:500-1:2000 ELISA 1:5000
Formulation	Liquid in PBS containing 50% Glycerol, 0.5% BSA and 0.02% Sodium Azide.
Isotype	IgG
Storage Instruction	Store at -20°C for up to 1 year from the date of receipt, and avoid repeat freeze-thaw cycles.

TARGET INFORMATION

Gene ID	976
Gene Symbol	ADGRE5
Uniprot ID	AGRE5_HUMAN
Immunogen	The antiserum was produced against synthesized peptide derived from the human CD97 beta at the amino acid range 512-561
Immunogen Region	512-561 aa
Specificity	Cleaved-CD97 Beta (S531) Polyclonal Antibody detects endogenous levels of fragment of activated CD97 Beta protein resulting from cleavage adjacent to S531.
Immunogen Sequence	



Western blot analysis of lysates from Jurkat cells, treated with etoposide 25uM 24h, using CD97 beta (Cleaved-Ser531) Antibody. The lane on the right is blocked with the synthesized peptide.