

Anti-Cleaved-CASP4-Q81 antibody (62-111 aa) (STJ90027)

STJ90027

GENERAL INFORMATION

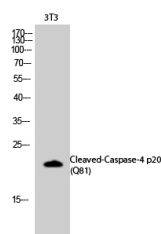
Product Type	Primary antibodies
Short Description	Rabbit polyclonal antibody anti-Cleaved-Caspase-4-IL-Q81 (62-111 aa) is suitable for use in Western Blot, Immunohistochemistry, Immunofluorescence and ELISA research applications.
Applications	WB/IHC/IF/ELISA
Host/Source	Rabbit
Reactivity	Human

PRODUCT PROPERTIES

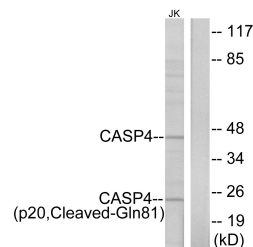
Clonality	Polyclonal
Clone ID	
Concentration	1 mg/mL
Conjugation	Unconjugated
Purification	The antibody was affinity-purified from rabbit antiserum by affinity-chromatography using epitope-specific immunogen.
Dilution Range	WB 1:500-1:2000 IHC 1:100-1:300 ELISA 1:40000 IF 1:50-200
Formulation	Liquid in PBS containing 50% Glycerol, 0.5% BSA and 0.02% Sodium Azide.
Isotype	IgG
Storage Instruction	Store at -20°C for up to 1 year from the date of receipt, and avoid repeat freeze-thaw cycles.

TARGET INFORMATION

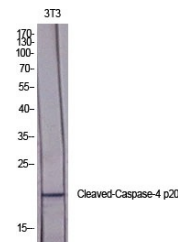
Gene ID	837
Gene Symbol	CASP4
Uniprot ID	CASP4_HUMAN
Immunogen	The antiserum was produced against synthesized peptide derived from the human Caspase 4 at the amino acid range 62-111
Immunogen Region	62-111 aa
Specificity	Cleaved-Caspase-4 p20 (Q81) Polyclonal Antibody detects endogenous levels of fragment of activated Caspase-4 p20 protein resulting from cleavage adjacent to Q81.
Immunogen Sequence	



Western blot analysis of 3T3 cells using Cleaved-Caspase-4 p20 (Q81) Polyclonal Antibody diluted at 1/4 2000



Western blot analysis of lysates from Jurkat cells, using Cleaved-Caspase-4 (p20, Cleaved-Gln81) Antibody. The lane on the right is blocked with the synthesized peptide.



Western blot analysis of various cells using Cleaved-Caspase-4 p20 (Q81) Polyclonal Antibody diluted at 1/4 2000

This product is suitable for in-vitro studies under the RESEARCH USE ONLY [RUO] licence. This product must not be used as for diagnostic or other medical purposes.
St John's Laboratory Ltd, Knowledge Dock Business Centre, University Way, London, E16 2RD | Tel: 0208 223 3081