

Anti-Cleaved-CASP8-D384 antibody (335-384 aa) (STJ90010)

STJ90010

GENERAL INFORMATION

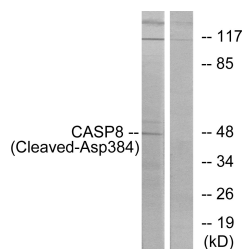
Product Type	Primary antibodies
Short Description	Rabbit polyclonal antibody anti-Cleaved-Caspase-8-D384 (335-384 aa) is suitable for use in Western Blot, Immunohistochemistry, Immunofluorescence and ELISA research applications.
Applications	WB/IHC/IF/ELISA
Host/Source	Rabbit
Reactivity	Human/Rat/Mouse

PRODUCT PROPERTIES

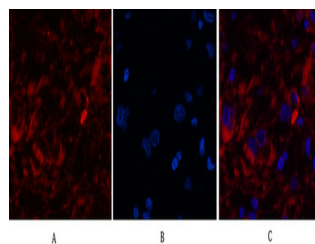
Clonality	Polyclonal
Clone ID	
Concentration	1 mg/mL
Conjugation	Unconjugated
Purification	The antibody was affinity-purified from rabbit antiserum by affinity-chromatography using epitope-specific immunogen.
Dilution Range	WB 1:500-2000 IF 1:50-300 IHC 1:50-300
Formulation	Liquid in PBS containing 50% Glycerol, 0.5% BSA and 0.02% Sodium Azide.
Isotype	IgG
Storage Instruction	Store at -20°C for up to 1 year from the date of receipt, and avoid repeat freeze-thaw cycles.

TARGET INFORMATION

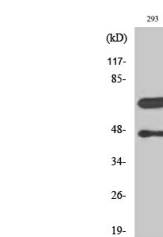
Gene ID	841
Gene Symbol	CASP8
Uniprot ID	CASP8_HUMAN
Immunogen	The antiserum was produced against synthesized peptide derived from the human Caspase 8 at the amino acid range 335-384
Immunogen Region	335-384 aa
Specificity	Cleaved-Caspase-8 (D384) Polyclonal Antibody detects endogenous levels of fragment of activated Caspase-8 protein resulting from cleavage adjacent to D384.
Immunogen Sequence	



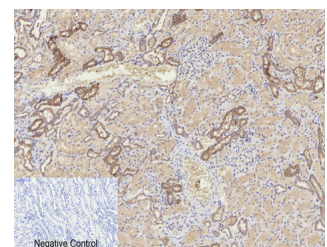
Western blot analysis of lysates from 293 cells, treated with etoposide 25μM 1h, using Caspase 8 (Cleaved-Asp384) Antibody. The lane on the right is blocked with the synthesized peptide.



Immunofluorescence analysis of Human-breast-cancer tissue. 1. Cleaved-Caspase-8 (D384) Polyclonal Antibody (red) was diluted at 1:200 (44°C, overnight). 2. Cy3 labeled Secondary antibody was diluted at 1:300 (room temperature, 50min). 3. Picture B: DAPI (blue) 10min. Picture A: Target. Picture B: DAPI. Picture C: merge of A+B



Western blot analysis of various cells using Cleaved-Caspase-8 (D384) Polyclonal Antibody



Immunohistochemical analysis of paraffin-embedded Human-kidney tissue. 1. Cleaved-Caspase-8 (D384) Polyclonal Antibody was diluted at 1:200 (44°C, overnight). 2. Sodium citrate pH 6.0 was used for antibody retrieval (>98°C, 20min). 3. Secondary antibody was diluted at 1:200 (room temperature, 30min). Negative control was used by secondary antibody only.

This product is suitable for in-vitro studies under the RESEARCH USE ONLY [RUO] licence. This product must not be used as for diagnostic or other medical purposes.
St John's Laboratory Ltd, Knowledge Dock Business Centre, University Way, London, E16 2RD | Tel: 0208 223 3081