

Anti-Cleaved-CASP1-D210 antibody (161-210 aa) (STJ90001)

STJ90001

GENERAL INFORMATION

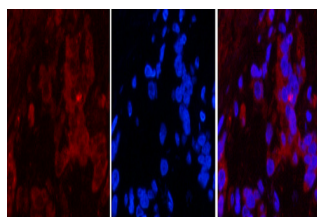
Product Type	Primary antibodies
Short Description	Rabbit polyclonal antibody anti-Cleaved-Caspase-1-D210 (161-210 aa) is suitable for use in Western Blot, Immunofluorescence, Immunohistochemistry and ELISA research applications.
Applications	WB/IF/IHC/ELISA
Host/Source	Rabbit
Reactivity	Human/Mouse/Rat

PRODUCT PROPERTIES

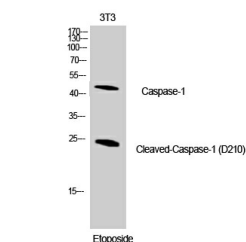
Clonality	Polyclonal
Clone ID	
Concentration	1 mg/mL
Conjugation	Unconjugated
Purification	The antibody was affinity-purified from rabbit antiserum by affinity-chromatography using epitope-specific immunogen.
Dilution Range	WB 1:500-2000 IHC-P 1:50-300 IF 1:50-300
Formulation	Liquid in PBS containing 50% Glycerol, 0.5% BSA and 0.02% Sodium Azide.
Isotype	IgG
Storage Instruction	Store at -20°C for up to 1 year from the date of receipt, and avoid repeat freeze-thaw cycles.

TARGET INFORMATION

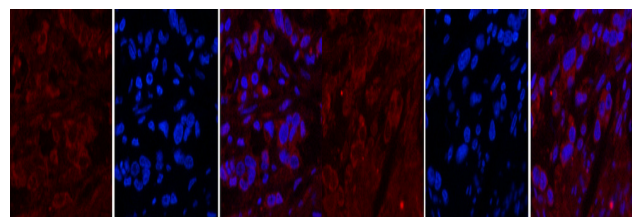
Gene ID	834
Gene Symbol	CASP1
Uniprot ID	CASP1_HUMAN
Immunogen	The antiserum was produced against synthesized peptide derived from the human Caspase-1 at the amino acid range 161-210
Immunogen Region	161-210 aa
Specificity	Cleaved-Caspase-1 (D210) Polyclonal Antibody detects endogenous levels of fragment of activated Caspase-1 protein resulting from cleavage adjacent to D210.
Immunogen Sequence	



Immunofluorescence analysis of Human-stomach-cancer tissue. 1. Cleaved-Caspase-1 (D210) Polyclonal Antibody (red) was diluted at 1:200 (4°C, overnight). 2. Cy3 labeled Secondary antibody was diluted at 1:300 (room temperature, 50min).3. Picture B: DAPI (blue) 10min. Picture A:Target. Picture B: DAPI. Picture C: merge of A+B



Western blot analysis of NIH-3T3 cells using Cleaved-Caspase-1 (D210) Polyclonal Antibody diluted at 1/4 1000



Immunofluorescence analysis of Human-stomach-cancer tissue. 1. Cleaved-Caspase-1 (D210) Polyclonal Antibody (red) was diluted at 1:200 (4°C, overnight). 2. Cy3 labeled Secondary antibody was diluted at 1:300 (room temperature, 50min).3. Picture B: DAPI (blue) 10min. Picture A:Target. Picture B: DAPI. Picture C: merge of A+B

Immunofluorescence analysis of Human-stomach-cancer tissue. 1. Cleaved-Caspase-1 (D210) Polyclonal Antibody (red) was diluted at 1:200 (4°C, overnight). 2. Cy3 labeled Secondary antibody was diluted at 1:300 (room temperature, 50min).3. Picture B: DAPI (blue) 10min. Picture A:Target. Picture B: DAPI. Picture C: merge of A+B

This product is suitable for in-vitro studies under the RESEARCH USE ONLY [RUO] licence. This product must not be used as for diagnostic or other medical purposes.
St John's Laboratory Ltd, Knowledge Dock Business Centre, University Way, London, E16 2RD | Tel: 0208 223 3081