

Anti-ACE2 antibody (N-Term) (STJ73762)

STJ73762

GENERAL INFORMATION

| | |
|--------------------------|--|
| Product Type | Primary antibodies |
| Short Description | Goat polyclonal antibody anti-ACE2 (N-Term) is suitable for use in ELISA, Western Blot, Immunohistochemistry and Flow Cytometry research applications. |
| Applications | Pep-ELISA/WB/IHC/FC |
| Host/Source | Goat |
| Reactivity | Human |

PRODUCT PROPERTIES

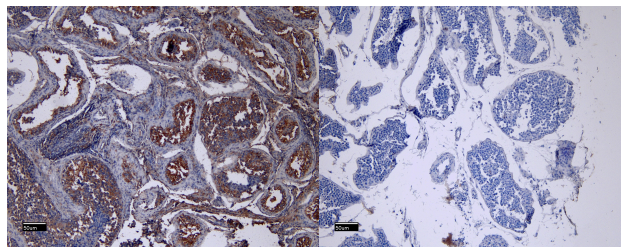
| | |
|----------------------------|---|
| Clonality | Polyclonal |
| Clone ID | |
| Concentration | 0.5 mg/mL |
| Conjugation | Unconjugated |
| Purification | Purified from goat serum by ammonium sulphate precipitation followed by antigen affinity chromatography using the immunizing peptide. |
| Dilution Range | Peptide ELISA: antibody detection limit dilution 1:128000. WB: Approx 90-100kDa band observed in lysates of cell line HepG2 (calculated MW of 92.4kDa according to NP_001358344.1). Recommended concentration 0.5-2ug/ml. Primary incubation 1 hour at 0.5 mg/ml in Tris saline, 0.02% sodium azide, pH7.3 with 0.5% bovine serum albumin. NA |
| Formulation | 0.5 mg/ml in Tris saline, 0.02% sodium azide, pH7.3 with 0.5% bovine serum albumin. NA |
| Isotype | IgG |
| Storage Instruction | Store at -20°C on receipt and minimise freeze-thaw cycles. |

TARGET INFORMATION

| | |
|---------------------------|-------------|
| Gene ID | 59272 |
| Gene Symbol | ACE2 |
| Uniprot ID | ACE2_HUMAN |
| Immunogen | |
| Immunogen Region | N-Term |
| Specificity | |
| Immunogen Sequence | PROPRIETARY |

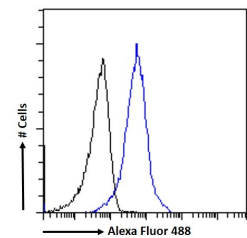


STJ73762 (1.5 µg/ml) staining of HepG2 cell lysate (35 µg protein in RIPA buffer). Detected by chemiluminescence.



STJ73762 (8 µg/ml) staining of paraffin embedded Human Testis. Heat induced antigen retrieval with citrate buffer pH 6, HRP-staining.

STJ73762 Negative Control showing staining of paraffin embedded Human Testis, with no primary antibody.



STJ73762 Flow cytometric analysis of paraformaldehyde fixed HepG2 cells (blue line), permeabilized with 0.5% Triton. Primary incubation 1hr (10 µg/ml) followed by Alexa Fluor 488 secondary antibody (1 µg/ml). NA NA IgG control: Unimmunized goat IgG (black line) followed by Alexa Fluor 488 secondary antibody.

This product is suitable for in-vitro studies under the RESEARCH USE ONLY [RUO] licence. This product must not be used as for diagnostic or other medical purposes.
St John's Laboratory Ltd, Knowledge Dock Business Centre, University Way, London, E16 2RD | Tel: 0208 223 3081