

Anti-ACE2 antibody (N-Term) (STJ73760)

STJ73760

GENERAL INFORMATION

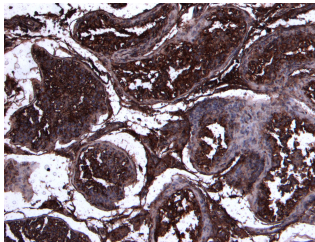
Product Type	Primary antibodies
Short Description	Goat polyclonal antibody anti-ACE2 (N-Term) is suitable for use in ELISA and Immunohistochemistry research applications.
Applications	Pep-ELISA/IHC
Host/Source	Goat
Reactivity	Human

PRODUCT PROPERTIES

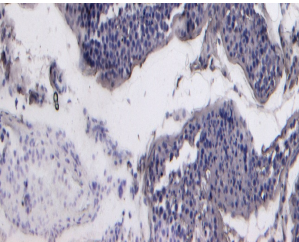
Clonality	Polyclonal
Clone ID	
Concentration	0.5 mg/mL
Conjugation	Unconjugated
Purification	Purified from goat serum by ammonium sulphate precipitation followed by antigen affinity chromatography using the immunizing peptide.
Dilution Range	Peptide ELISA: antibody detection limit dilution 1:32000. IHC: Paraffin embedded Human Testis. Recommended concentration: 8µg/ml. A customer reported weak staining on paraffin embedded Human Kidney, at a concentration of 5ug/ml.
Formulation	0.5 mg/ml in Tris saline, 0.02% sodium azide, pH7.3 with 0.5% bovine serum albumin. NA
Isotype	IgG
Storage Instruction	Store at -20°C on receipt and minimise freeze-thaw cycles.

TARGET INFORMATION

Gene ID	59272
Gene Symbol	ACE2
Uniprot ID	ACE2_HUMAN
Immunogen	
Immunogen Region	N-Term
Specificity	
Immunogen Sequence	PROPRIETARY



STJ73760 (8Aug/ml) staining of paraffin embedded Human Testis. Heat induced antigen retrieval with citrate buffer pH 6, HRP-staining.



STJ73760 Negative Control showing staining of paraffin embedded Human Testis, with no primary antibody.

This product is suitable for in-vitro studies under the RESEARCH USE ONLY [RUO] licence. This product must not be used as for diagnostic or other medical purposes.
St John's Laboratory Ltd, Knowledge Dock Business Centre, University Way, London, E16 2RD | Tel: 0208 223 3081