

Anti-IRF4 antibody (393-407) (STJ73743)

STJ73743

GENERAL INFORMATION

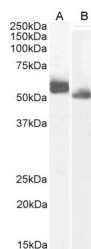
Product Type	Primary antibodies
Short Description	Goat polyclonal antibody anti-IRF4 (393-407) is suitable for use in ELISA, Western Blot, Immunohistochemistry and Flow Cytometry research applications.
Applications	Pep-ELISA/WB/IHC/FC
Host/Source	Goat
Reactivity	Human/Mouse/Rat/Dog/Cow

PRODUCT PROPERTIES

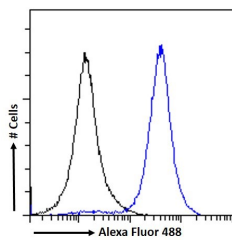
Clonality	Polyclonal
Clone ID	
Concentration	0.5 mg/mL
Conjugation	Unconjugated
Purification	Purified from goat serum by ammonium sulphate precipitation followed by antigen affinity chromatography using the immunizing peptide.
Dilution Range	Peptide ELISA: antibody detection limit dilution 1:16000. WB: Approx 55kDa band observed in Human Spleen and approx 52kDa in Rat Spleen lysates (calculated MW of 51.8kDa according to Human NP_002451.2 and 51.6kDa according to Human NP_001182215.1)
Formulation	0.5 mg/ml in Tris saline, 0.02% sodium azide, pH7.3 with 0.5% bovine serum albumin. NA
Isotype	IgG
Storage Instruction	Store at -20°C on receipt and minimise freeze-thaw cycles.

TARGET INFORMATION

Gene ID	3662
Gene Symbol	IRF4
Uniprot ID	IRF4_HUMAN
Immunogen	
Immunogen Region	393-407
Specificity	This antibody is expected to recognize both reported isoforms (DPQRQRKLITAHVEP
Immunogen Sequence	



STJ73743 (0.3 µg/ml) staining of Human (A) and (0.1 µg/ml) Rat (B) Spleen lysate (35 µg protein in RIPA buffer).



STJ73743 Flow cytometric analysis of paraformaldehyde fixed A431 cells (blue line) permeabilized with 0.5% Triton. Primary incubation 1 hr (10 µg/ml) followed by Alexa Fluor 488 secondary antibody (1 µg/ml). IgG control: Unimmunized goat IgG (black line) followed by Alexa Fluor 488 secondary antibody.

This product is suitable for in-vitro studies under the RESEARCH USE ONLY [RUO] licence. This product must not be used as for diagnostic or other medical purposes.
St John's Laboratory Ltd, Knowledge Dock Business Centre, University Way, London, E16 2RD | Tel: 0208 223 3081