

Anti-ATF6 antibody (C or N-Term) (STJ73653)

STJ73653

GENERAL INFORMATION

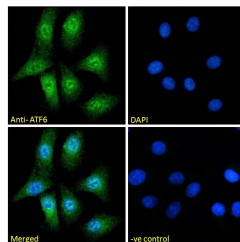
Product Type	Primary antibodies
Short Description	Goat polyclonal antibody anti-ATF6 (C or N-Term) is suitable for use in ELISA, Immunofluorescence and Flow Cytometry research applications.
Applications	Pep-ELISA/IF/FC
Host/Source	Goat
Reactivity	Human

PRODUCT PROPERTIES

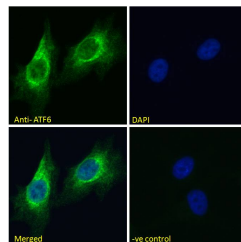
Clonality	Polyclonal
Clone ID	
Concentration	0.5 mg/mL
Conjugation	Unconjugated
Purification	Purified from goat serum by ammonium sulphate precipitation followed by antigen affinity chromatography using the immunizing peptide.
Dilution Range	Peptide ELISA: antibody detection limit dilution 1:8000. IF: Strong expression of the protein seen in the nuclei and cytoplasm of A549 and in the endoplasmic reticulum and cytoplasm of HeLa cells. Recommended concentration: 10µg/ml. FC: Flow cyt
Formulation	0.5 mg/ml in Tris saline, 0.02% sodium azide, pH7.3 with 0.5% bovine serum albumin. NA
Isotype	IgG
Storage	Store at -20°C on receipt and minimise freeze-thaw cycles.
Instruction	

TARGET INFORMATION

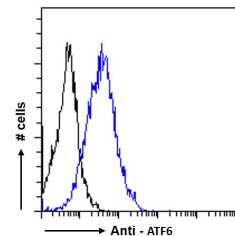
Gene ID	22926
Gene Symbol	ATF6
Uniprot ID	ATF6A_HUMAN
Immunogen	
Immunogen Region	C or N-Term
Specificity	
Immunogen Sequence	EATHVSTIPESLQ



STJ73653 Immunofluorescence analysis of paraformaldehyde fixed A549 cells, permeabilized with 0.15% Triton. Primary incubation 1hr (10ug/ml) followed by Alexa Fluor 488 secondary antibody (2ug/ml), showing nuclear and cytoplasmic staining. The nuclear stain is DAPI (blue). Negative control: Unimmunized goat IgG (10ug/ml) followed by Alexa Fluor 488 secondary antibody (2ug/ml).



STJ73653 Immunofluorescence analysis of paraformaldehyde fixed HeLa cells, permeabilized with 0.15% Triton. Primary incubation 1hr (10ug/ml) followed by Alexa Fluor 488 secondary antibody (2ug/ml), showing endoplasmic reticulum and cytoplasmic staining. The nuclear stain is DAPI (blue). Negative control: Unimmunized goat IgG (10ug/ml) followed by Alexa Fluor 488 secondary antibody (2ug/ml).



STJ73653 Flow cytometric analysis of paraformaldehyde fixed HeLa cells (blue line), permeabilized with 0.5% Triton. Primary incubation 1hr (10ug/ml) followed by Alexa Fluor 488 secondary antibody (1ug/ml). IgG control: Unimmunized goat IgG (black line) followed by Alexa Fluor 488 secondary antibody.

This product is suitable for in-vitro studies under the RESEARCH USE ONLY [RUO] licence. This product must not be used as for diagnostic or other medical purposes.
St John's Laboratory Ltd, Knowledge Dock Business Centre, University Way, London, E16 2RD | Tel: 0208 223 3081