

Anti-TRPM2 antibody (Internal) (STJ73598)

STJ73598

GENERAL INFORMATION

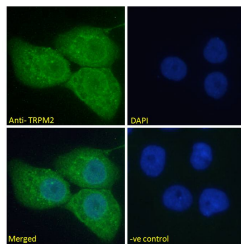
Product Type	Primary antibodies
Short Description	Goat polyclonal antibody anti-TRPM2 (Internal) is suitable for use in ELISA, Immunofluorescence, Flow Cytometry and Immunohistochemistry research applications.
Applications	Pep-ELISA/IF/FC/IHC
Host/Source	Goat
Reactivity	Human/Mouse/Cow

PRODUCT PROPERTIES

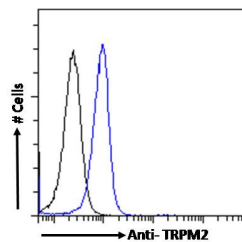
Clonality	Polyclonal
Clone ID	
Concentration	0.5 mg/mL
Conjugation	Unconjugated
Purification	Purified from goat serum by ammonium sulphate precipitation followed by antigen affinity chromatography using the immunizing peptide.
Dilution Range	Peptide ELISA: antibody detection limit dilution 1:16000. IHC: Paraffin embedded Human Pancreas and Brain (Cortex). Recommended concentration: 3.75µg/ml. IF: Strong expression of the protein seen in the nuclear membranes and cytoplasm of A431
Formulation	0.5 mg/ml in Tris saline, 0.02% sodium azide, pH7.3 with 0.5% bovine serum albumin. NA
Isotype	IgG
Storage Instruction	Store at -20°C on receipt and minimise freeze-thaw cycles.

TARGET INFORMATION

Gene ID	7226
Gene Symbol	TRPM2
Uniprot ID	TRPM2_HUMAN
Immunogen	
Immunogen Region	Internal
Specificity	
Immunogen Sequence	QQKQRPEQKIED



STJ73598 Immunofluorescence analysis of paraformaldehyde fixed A431 cells, permeabilized with 0.15% Triton. Primary incubation 1hr (10µg/ml) followed by Alexa Fluor 488 secondary antibody (2µg/ml), showing nuclear membrane and cytoplasmic staining. The nuclear stain is DAPI (blue). Negative control: Unimmunized goat IgG (10µg/ml) followed by Alexa Fluor 488 secondary antibody (2µg/ml).



STJ73598 Flow cytometric analysis of paraformaldehyde fixed Jurkat cells (blue line), permeabilized with 0.5% Triton. Primary incubation 1hr (10µg/ml) followed by Alexa Fluor 488 secondary antibody (1µg/ml). IgG control: Unimmunized goat IgG (black line) followed by Alexa Fluor 488 secondary antibody.