

Anti-AKT1 antibody (Internal) (STJ73595)

STJ73595

GENERAL INFORMATION

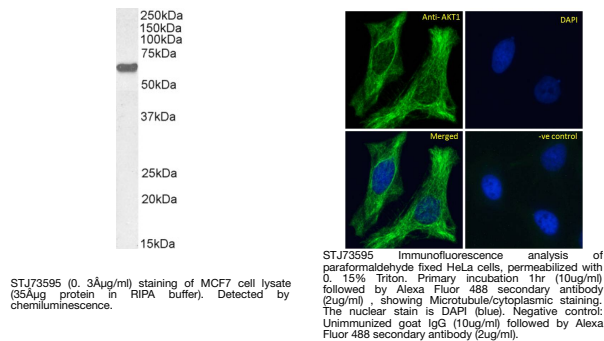
Product Type	Primary antibodies
Short Description	Goat polyclonal antibody anti-AKT1 (Internal) is suitable for use in ELISA, Western Blot, Immunofluorescence and Flow Cytometry research applications.
Applications	Pep-ELISA/WB/IF/FC
Host/Source	Goat
Reactivity	Human/Mouse

PRODUCT PROPERTIES

Clonality	Polyclonal
Clone ID	
Concentration	0.5 mg/mL
Conjugation	Unconjugated
Purification	Purified from goat serum by ammonium sulphate precipitation followed by antigen affinity chromatography using the immunizing peptide.
Dilution Range	Peptide ELISA: antibody detection limit dilution 1:32000. WB: Approx 60kDa band observed in MCF7 cell lysates and approx. 55kDa in preliminary testing of K562 and NIH3T3 cell lysate (calculated MW of 55.7kDa according to NP_005154.2). These molec
Formulation	0.5 mg/ml in Tris saline, 0.02% sodium azide, pH7.3 with 0.5% bovine serum albumin. NA
Isotype	IgG
Storage Instruction	Store at -20°C on receipt and minimise freeze-thaw cycles.

TARGET INFORMATION

Gene ID	207
Gene Symbol	AKT1
Uniprot ID	AKT1_HUMAN
Immunogen	
Immunogen Region	Internal
Specificity	All variants represent identical protein (NP_005154.2, NP_001014431.1, NP_001014432.1). This antibody is NOT expected to cross-react with AKT2. It may recognize AKT1 in Rat and Dog.
Immunogen Sequence	QDVDQREAPLN



This product is suitable for in-vitro studies under the RESEARCH USE ONLY [RUO] licence. This product must not be used as for diagnostic or other medical purposes.
St John's Laboratory Ltd, Knowledge Dock Business Centre, University Way, London, E16 2RD | Tel: 0208 223 3081