

## Anti-MDH2 antibody (221-232) (STJ73574)

STJ73574

### GENERAL INFORMATION

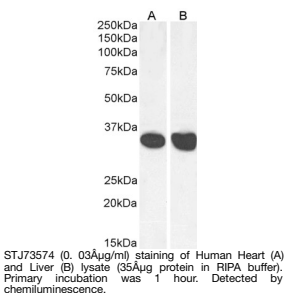
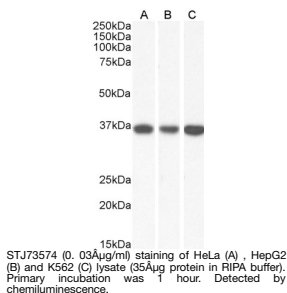
|                          |   |
|--------------------------|---|
| <b>Product Type</b>      | Primary antibodies  |
| <b>Short Description</b> | Goat polyclonal antibody anti-MDH2 (221-232) is suitable for use in ELISA, Western Blot and Immunohistochemistry research applications. |
| <b>Applications</b>      | Pep-ELISA/WB/IHC  |
| <b>Host/Source</b>       | Goat  |
| <b>Reactivity</b>        | Human   |

### PRODUCT PROPERTIES

|                            |   |
|----------------------------|---|
| <b>Clonality</b>           | Polyclonal  |
| <b>Clone ID</b>            |   |
| <b>Concentration</b>       | 0.5 mg/mL   |
| <b>Conjugation</b>         | Unconjugated  |
| <b>Purification</b>        | Purified from goat serum by ammonium sulphate precipitation followed by antigen affinity chromatography using the immunizing peptide.   |
| <b>Dilution Range</b>      | Peptide ELISA: antibody detection limit dilution 1:16000.<br>WB: Approx 36-37kDa band observed in lysates of cell lines HeLa, HepG2 and K562, and approx 35kDa band observed in Human Heart and Liver lysates (calculated MW of 35.5kDa according to NP_0 |
| <b>Formulation</b>         | 0.5 mg/ml in Tris saline, 0.02% sodium azide, pH7.3 with 0.5% bovine serum albumin. NA  |
| <b>Isotype</b>             | IgG   |
| <b>Storage Instruction</b> | Store at -20°C on receipt and minimise freeze-thaw cycles.  |

### TARGET INFORMATION

|                           |              |
|---------------------------|--------------|
| <b>Gene ID</b>            | 4191         |
| <b>Gene Symbol</b>        | MDH2         |
| <b>Uniprot ID</b>         | MDHM_HUMAN   |
| <b>Immunogen</b>          |              |
| <b>Immunogen</b>          | 221-232      |
| <b>Region</b>             |              |
| <b>Specificity</b>        |              |
| <b>Immunogen Sequence</b> | DQLTALTGRIQE |



This product is suitable for in-vitro studies under the RESEARCH USE ONLY [RUO] licence. This product must not be used as for diagnostic or other medical purposes.  
St John's Laboratory Ltd, Knowledge Dock Business Centre, University Way, London, E16 2RD | Tel: 0208 223 3081