

Anti-MDH2 antibody (Internal) (STJ73573)

STJ73573

GENERAL INFORMATION

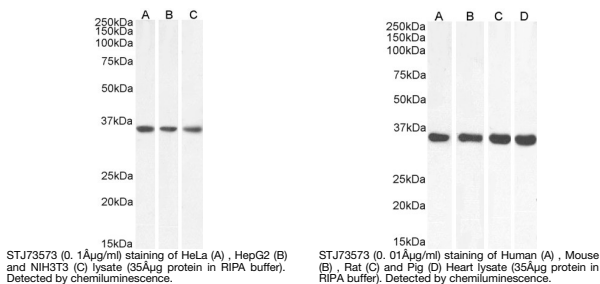
| | |
|--------------------------|--|
| Product Type | Primary antibodies |
| Short Description | Goat polyclonal antibody anti-MDH2 (Internal) is suitable for use in ELISA, Western Blot and Immunohistochemistry research applications. |
| Applications | Pep-ELISA/WB/IHC |
| Host/Source | Goat |
| Reactivity | Human/Mouse/Rat/Pig/Cow |

PRODUCT PROPERTIES

| | |
|----------------------------|--|
| Clonality | Polyclonal |
| Clone ID | |
| Concentration | 0.5 mg/mL |
| Conjugation | Unconjugated |
| Purification | Purified from goat serum by ammonium sulphate precipitation followed by antigen affinity chromatography using the immunizing peptide. |
| Dilution Range | Peptide ELISA: antibody detection limit dilution 1:8000. WB: Approx 35kDa band observed in lysates of cell lines HeLa, HepG2 and NIH3T3 (calculated MW of 35.5kDa according to Human NP_005909.2 and 35.6kDa according to Mouse NP_032643.2). Recomm |
| Formulation | 0.5 mg/ml in Tris saline, 0.02% sodium azide, pH7.3 with 0.5% bovine serum albumin. NA |
| Isotype | IgG |
| Storage Instruction | Store at -20°C on receipt and minimise freeze-thaw cycles. |

TARGET INFORMATION

| | |
|---------------------------|------------|
| Gene ID | 4191 |
| Gene Symbol | MDH2 |
| Uniprot ID | MDHM_HUMAN |
| Immunogen | |
| Immunogen Region | Internal |
| Specificity | |
| Immunogen Sequence | TRDDLFTNAT |



This product is suitable for in-vitro studies under the RESEARCH USE ONLY [RUO] licence. This product must not be used as for diagnostic or other medical purposes.
St John's Laboratory Ltd, Knowledge Dock Business Centre, University Way, London, E16 2RD | Tel: 0208 223 3081