

Anti-DLX2 antibody (279-292) (STJ73540)

STJ73540

GENERAL INFORMATION

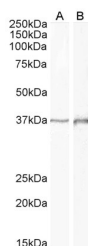
Product Type	Primary antibodies
Short Description	Goat polyclonal antibody anti-DLX2 (279-292) is suitable for use in ELISA and Western Blot research applications.
Applications	Pep-ELISA/WB
Host/Source	Goat
Reactivity	Human/Mouse/Rat/Dog/Pig/Cow

PRODUCT PROPERTIES

Clonality	Polyclonal
Clone ID	
Concentration	0.5 mg/mL
Conjugation	Unconjugated
Purification	Purified from goat serum by ammonium sulphate precipitation followed by antigen affinity chromatography using the immunizing peptide.
Dilution Range	Peptide ELISA: antibody detection limit dilution 1:4000. WB: Approx 37-38kDa band observed in Human (Cerebellum) and Rat Brain lysates (calculated MW of 34.2kDa according to Human NP_004396.1 and 34.8kDa according to Rat NP_001178675.1). Recommend
Formulation	0.5 mg/ml in Tris saline, 0.02% sodium azide, pH7.3 with 0.5% bovine serum albumin. NA
Isotype	IgG
Storage Instruction	Store at -20°C on receipt and minimise freeze-thaw cycles.

TARGET INFORMATION

Gene ID	1746
Gene Symbol	DLX2
Uniprot ID	DLX2_HUMAN
Immunogen	
Immunogen Region	279-292
Specificity	
Immunogen Sequence	NYPWYHQTSGSASH



STJ73540 (1 µg/ml) staining of Human Cerebellum (A) and Rat (B) Brain lysate (35 µg protein in RIPA buffer). Primary incubation was 1 hour. Detected by chemiluminescence.

This product is suitable for in-vitro studies under the RESEARCH USE ONLY [RUO] licence. This product must not be used as for diagnostic or other medical purposes.
St John's Laboratory Ltd, Knowledge Dock Business Centre, University Way, London, E16 2RD | Tel: 0208 223 3081