

Anti-SLC7A6/y+LAT-2 antibody (C-Term) (STJ73535)

STJ73535

GENERAL INFORMATION

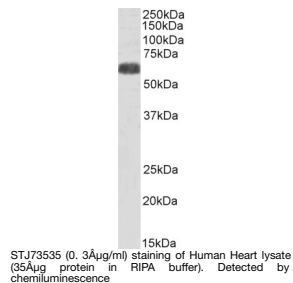
Product Type	Primary antibodies
Short Description	Goat polyclonal antibody anti-SLC7A6/y+LAT-2 (C-Term) is suitable for use in ELISA, Western Blot and Immunohistochemistry research applications.
Applications	Pep-ELISA/WB/IHC
Host/Source	Goat
Reactivity	Human

PRODUCT PROPERTIES

Clonality	Polyclonal
Clone ID	
Concentration	0.5 mg/mL
Conjugation	Unconjugated
Purification	Purified from goat serum by ammonium sulphate precipitation followed by antigen affinity chromatography using the immunizing peptide.
Dilution Range	Peptide ELISA: antibody detection limit dilution 1:32000. WB: Approx 58-60kDa band observed in Human Heart lysates (calculated MW of 56.8kDa according to NP_003974.3. Recommended concentration: 0.3-1µg/ml. Primary incubation was 1 hour. IHC:
Formulation	0.5 mg/ml in Tris saline, 0.02% sodium azide, pH7.3 with 0.5% bovine serum albumin. NA
Isotype	IgG
Storage	Store at -20°C on receipt and minimise freeze-thaw cycles.
Instruction	

TARGET INFORMATION

Gene ID	9057
Gene Symbol	SLC7A6
Uniprot ID	YLAT2_HUMAN
Immunogen	
Immunogen Region	C-Term
Specificity	Reported variants represent identical protein: NP_003974.3, NP_001070253.1
Immunogen Sequence	ELDVAAEEKDKERTD



This product is suitable for in-vitro studies under the RESEARCH USE ONLY [RUO] licence. This product must not be used as for diagnostic or other medical purposes.
St John's Laboratory Ltd, Knowledge Dock Business Centre, University Way, London, E16 2RD | Tel: 0208 223 3081