

Anti-ALPL antibody (42-53) (STJ73461)

STJ73461

GENERAL INFORMATION

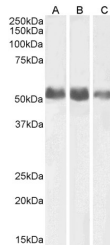
Product Type	Primary antibodies
Short Description	Goat polyclonal antibody anti-ALPL (42-53) is suitable for use in ELISA and Western Blot research applications.
Applications	Pep-ELISA/WB
Host/Source	Goat
Reactivity	Human/Mouse/Rat

PRODUCT PROPERTIES

Clonality	Polyclonal
Clone ID	
Concentration	0.5 mg/mL
Conjugation	Unconjugated
Purification	Purified from goat serum by ammonium sulphate precipitation followed by antigen affinity chromatography using the immunizing peptide.
Dilution Range	Peptide ELISA: antibody detection limit dilution 1:64000. WB: Approx 55kDa band observed in Human Kidney, Lung and Adrenal Gland lysates (calculated MW of 57.3kDa according to NP_000469.3). Recommended concentration: 0.1-0.3µg/ml.
Formulation	0.5 mg/ml in Tris saline, 0.02% sodium azide, pH7.3 with 0.5% bovine serum albumin. NA
Isotype	IgG
Storage Instruction	Store at -20°C on receipt and minimise freeze-thaw cycles.

TARGET INFORMATION

Gene ID	249
Gene Symbol	ALPL
Uniprot ID	PPBT_HUMAN
Immunogen	
Immunogen Region	42-53
Specificity	This antibody is expected to recognize isoform 1 (NP_000469.3) only. The immunizing peptide represents the N terminus of the mature protein.
Immunogen Sequence	ELQKLNTNVAKN



STJ73461 (0.1 µg/ml) staining of Human Kidney (A), Lung (B) and Adrenal Gland (C) lysates (35 µg protein in RIPA buffer). Primary incubation was 1 hour. Detected by chemiluminescence.

This product is suitable for in-vitro studies under the RESEARCH USE ONLY [RUO] licence. This product must not be used as for diagnostic or other medical purposes.
St John's Laboratory Ltd, Knowledge Dock Business Centre, University Way, London, E16 2RD | Tel: 0208 223 3081